

**RUTHERFORD COUNTY SCHOOL SYSTEM
2240 Southpark Drive
Murfreesboro, TN 37128**

**March 10, 2022
5:00 P.M.**

AGENDA

- 1. CALL TO ORDER**
- 2. PLEDGE OF ALLEGIANCE**
- 3. MOMENT OF SILENCE**
- 4. APPROVAL OF AGENDA**

Recommended Approval---motion to approve the agenda as presented.

5. APPROVAL OF CONSENT AGENDA (TAB 1)

A. Minutes: February 24, 2022 Board Meeting

B. Community Use of Facilities

**C. Routine Bids: Bid #3577 – Lexmark Printers
Bid #3583 – Drainage at Baseball/Courtyard
Bid #3584 – USDA Commodities
Bid #3589 – Synthetic Turf – Smyrna High**

For Board Information Only:

For E-Rate purposes Rutherford County Schools desires to retain to purchase from Education Networks of America Inc./ENA Services, LLC Wide Area Network (WAN) and internet access services, pursuant to the Tennessee Education Broadband Consortium (TEBC) statewide master contract #68881 Education Networks of America, for a period of July 1, 2022 - June 30, 2025 with one 12-month voluntary extension.

D. School Salary Supplements and Contract Payments:

Name	Amount	School	Funded By	Description
Andrew Brewer	NTE \$ 1,000.00	Oakland Middle	School Funds-Swimming	Coaching/Running Spring training program
Debbie Burton *1	NTE \$250.00	Rockvale High	School Funds – Band	Concert Band Competition Adjudicator
Christopher Lowry	NTE \$4,000.00	Rockvale High	School Funds-Band	Marching Band Drill + Percussion Writing
Andrew Lynn *1	NTE \$150.00	Rockvale High	School Funds-Band	Pre-CPA Concert Adjudication
Travis Childers	NTE \$6,000.00	Siegel High	Various Accounts	Lighting Technician + Building Supervisor
Eric Smith *6	NTE \$2,500.00	Siegel High	School Funds-Various Sports + Clubs	Bus Driver
Mariah Childress	NTE \$520.00	Smyrna High	School Funds – Boys + Girls Basketball	Ticket Booth worker for Basketball
Anoulom Phimphivong *6	NTE \$1,500.00	Smyrna High	School Funds-Various Sports + Clubs	Bus Driver
Steve Williams	NTE \$990.00	Smyrna High	School Funds – Boys + Girls Basketball	Scorekeeper for Basketball
Preston Scott *1	NTE \$400.00	Stewarts Creek High	School Funds-General Athletics	Admin for Regional Basketball Tournament
Larry Smith	NTE \$3,500.00	All Schools	School Funds-Track	Timing Track Meets/Meet setup + run
Katie Tzompanakis	NTE \$1,000.00	Oakland High	School Funds-Band + Band Boosters	Staff – Instructor
Seth Henson	NTE \$1,000.00	Oakland Middle	School Funds-Baseball	Assistant Baseball Coach
Jazmyn Shanklin	NTE \$500.00	Riverdale	School Funds-Dance Team	Assistant Dance Coach + Choreographer
Tracy Nelson	NTE \$645.90	Rockvale Middle	School Funds-Baseball	Assistant Baseball Coach
Jeff Shipley	NTE \$1,500.00	Smyrna High	School Funds – Boys + Girls Basketball	Announcer for Boys + Girls Basketball
Trenton Short	NTE \$750.00	Smyrna High	School Funds – Boys + Girls Basketball	Clock Operator for Boys + Girls Basketball
Kyle Williams	NTE \$840.00	Thurman Francis	School Funds-Band	Private lessons

****Unless listed as an hourly rate**

1. Approved previously for an amount \$500 or greater
2. Not less than regular hourly rate-or overtime rate if working over 40 hours during the week
3. Anticipate amounts over \$500 this school year
4. Amend prior approval
5. Less than \$500 but part of event total
6. Pending approval by Transportation Dept.

E. Non-Faculty Volunteer Coaches:

According to Tennessee Secondary School Athletic Association (TSSAA) guidelines, Board of Education approval is required to allow non-faculty volunteer coaches to participate in the school athletic programs.

The following non-faculty volunteer coaches are for the 2022-23 school year:

<u>Name</u>	<u>School</u>	<u>Sport</u>
Matthew Hayes Hunter	Riverdale High School	Theater
Katie Tzompanakis	Oakland High School	Band
Kyle Williams	Thurman Francis Arts Academy	Band
Tim Denney	Central Magnet	Softball
Chris Erwin	Rocky Fork Middle	Baseball
Demondre Ogletton	Oakland Middle	Cheer
Andrew Reed	Thurman Francis	Baseball
Benjamin Jones	Central Magnet	MS Boys Soccer
Joseph Clagg	Central Magnet	MS Boys Soccer
Katie Cherry	Blackman High	Softball

Recommended Approval---motion to approve the consent agenda items as presented.

6. SPOTLIGHT ON EDUCATION

Siegel High School will give a presentation about its Aviation Program.

7. VISITORS

8. CAPITAL PROJECT FUND BUDGET AMENDMENT FOR SMYRNA HIGH SCHOOL FOOTBALL TURF PROJECT (TAB 2)

Smyrna High School is asking for permission from the Rutherford County School Board to install artificial turf on the Smyrna High School football field. This project will be 100% funded by donations and will be budgeted and accounted for in the county Educational Capital Projects Fund as Smyrna High School does not have a legally separate football booster club. Total Project Cost is estimated at \$900,000. The attached document detailing the project has been reviewed by the Assistant Superintendent of Budget & Finance for financial compliance, as well as the RCS Staff Attorney and RCS Athletic Director for legal and Title IX compliance.

Contingent of School Board approval, the turf purchase will be made through the RCS purchasing department and upon completion of the project, RCS Engineering will inspect the construction to ensure that it complies with bid specifications. It is stressed that the turf project becomes a donated asset to Rutherford County Schools and that at the time of donation there will be no liens on the donated property/construction as verified by the RCS board attorney.

Recommended Approval--- motion to accept the generous donation of Smyrna Ready Mix, to approve the artificial turf project as presented for the project at Smyrna High School, as well as approve the budget amendment to fund 177 to budget this capital project as presented.

9. EMERGENCY SMYRNA PD CENTER ROOF REQUEST (TAB 3)

During recent storms, portions of the roof on the Smyrna PD Center were lifted and sat back down. Temporary repairs have been made to protect the building. A roof replacement is required at this time. We are requesting to utilize existing funds in the 177 fund left from the Thurman Francis Project. Mr. Bodary agrees with this request and will provide a budget amendment when the time is appropriate.

Recommended Approval---motion to approve the request to utilize \$57,541.26 from the fund 177 to replace the damaged roof at the Smyrna PD Center as presented.

10. PRESENTATION BY POTENTIAL ZONING CONSULTANTS (For Information Only)

11. BIOMETRICS COMPONENT OF THE ELECTRONIC TIMEKEEPING

Recommended Approval--- motion to adjust the Electronic Time Keeping System to keep time and code entry portions of the system, but to remove the biometric finger printing and biometric face recognition and/or photo elements of the system as presented.

12. TENNESSEE INVESTMENT IN STUDENT ACHIEVEMENT (TISA) (For Information Only)

13. BOOSTER CLUB GUIDLINES

14. NAMING OF SMYRNA HIGH SCHOOL FOOTBALL FIELD (TAB 4)

Smyrna High School is requesting that the football field at Smyrna High School's Robert L. Raikes Stadium, be named after Smyrna Ready Mix. The facility would be called the "Smyrna Ready Mix field at Robert L. Raikes Stadium."

Recommended Approval--- motion to approve the football field at Smyrna High School to be named after Smyrna Ready Mix. The facility would be called the "Smyrna Ready Mix field at Robert L. Raikes Stadium" as presented.

15. 2022-2023 SPECIAL COURSE REQUEST (TAB 5)

The Instruction Department is requesting permission to make an application to offer credit for special courses under the following guidelines:

Rule 0520-1-3-05-2a: “Local school systems may offer special courses not listed in 0520-1-3-06 on an experimental basis. The Commissioner of Education must approve each course in advance each year.” Rutherford County High Schools are requesting approval for the following special course requests:

- **Life Skills and Management**

Recommended Approval--- motion to approve the 2022-2023 special course requests or Rutherford County High Schools as presented.

16. LEGAL (TAB 6)

DISCIPLINARY HEARING APPEAL

- 1. The Board has been requested to review a decision of the Disciplinary Hearing Authority (DHA) to uphold the remandment of a student from Stewarts Creek High School. Based on a review of the DHA’s record, the Board may:**

- A. Affirm the decision of the DHA;**
- B. Overturn the decision of the DHA; or**
- C. Grant a hearing before the Board.**

Recommended Approval--- motion to approve the Board initiate a motion in line with one of the above options as presented.

- 2. The Board has been requested to review a decision of the Disciplinary Hearing Authority (DHA) to uphold the remandment of a student from Smyrna High School. Based on a review of the DHA’s record, the Board may:**

- A. Affirm the decision of the DHA;**
- B. Overturn the decision of the DHA; or**
- C. Grant a hearing before the Board.**

Recommended Approval--- motion to approve the Board initiate a motion in line with one of the above options as presented.

17. FINANCIAL MATTERS (TAB 7)

1. Stewarts Creek High School Football Booster Club Turf Project Request

The Red Hawk Football Booster Club, Inc. is asking for permission from the Rutherford County School Board to install artificial turf on the Stewarts Creek High School football field. This project will be 100% funded by the Booster Club and an unsecured loan that will be payable by the booster club. Total project cost is estimated at \$790,000. The attached document detailing the project has been reviewed by the Assistant Superintendent of Budget & Finance for financial compliance, as well as the RCS Staff Attorney and RCS Athletic Director for legal and Title IX compliance. Contingent of School Board approval, the turf purchase will be made through the RCS purchasing department and upon completion of the project, RCS Engineering will inspect the construction to ensure that it complies with bid specifications. It is stressed that the turf project becomes a donated asset from the Booster Club to Rutherford County Schools and that at the time of donation there will be no liens on the donated property/construction as verified by the RCS board attorney.

Recommended Approval--- motion to approve the Red Hawk Booster Project Request as presented with no cost of construction to the Rutherford County Board of Education as presented.

18. FACILITIES (TAB 8)

1. Blackman Middle School Auditorium Light Request

Principal Amy Connifey-Marlin has requested to upgrade a portion of the auditorium light system. Engineering and Construction has reviewed the request and approves. This request is at no cost to the Board.

Recommended Approval--- motion to approve the Blackman Middle request to upgrade a portion of the Auditorium Lights at no cost to the Board as presented.

2. 5-Year Building Program

On Tuesday February 22, 2022, the 5-year Building Program was approved by the Health and Education committee in concept. Funding for the design was also approved. The Commission Committee requested the Board prioritize the first two years projects over a three-year period and come back before them with their request. Full County Commission approval is required. We are requesting Board discussion and guidance for moving forward.

Recommended Approval--- motion to approve the 5-year Building Programs first two years prioritized list for three years implementation as presented.

3. Rocky Fork Middle Baseball Scoreboard Electrical Request

Principal Jennifer Clark has requested to install electrical service to the location for a future score board. Engineering and Construction has reviewed the request and approves. This request is at no cost to the Board.

Recommended Approval--- motion to approve the Rocky Fork Middle Baseball Scoreboard Electrical Service at no cost to the Board as presented.

4. Stewarts Creek Middle Wildflower Garden and Apiary Project

Principal Letoni Murry has requested to install a wildflower garden. This is a STEM Project to be funded by TSIN/TVA. Engineering and Construction has requested and approves.

Recommended Approval--- motion to approve the Stewarts Creek Middle Wildflower Garden and Apiary Project as no cost to the Board as presented.

5. CTE and Oakland High School Storage Building

Principal John Marshall and CTE are requesting to construct a 24' x 36' Metal sided Storage Building. Engineering and Construction has reviewed the request and approves. The Building will be funded from CTE funds and kept below \$25,000.00.

Recommended Approval--- motion to approve the CTE and Oakland High School request to build a 24' x 36' storage building utilizing CTE funds as presented.

19. INSURANCE UPDATE

20. DIRECTORS UPDATE

21. TENNESSEE LEGISLATIVE NETWORK (TLN) UPDATE

22. FEDERAL RELATIONS NETWORK (FRN) UPDATE

23. GENERAL DISCUSSION

24. ADJOURNMENT

RUTHERFORD COUNTY SCHOOL SYSTEM
Board of Education Meeting
2240 Southpark Drive
Murfreesboro, TN 37128

Minutes of February 24, 2022

Board Members Present

Tiffany Johnson, Board Chairwoman

Shelia Bratton, Vice-Chair

Coy Young

Jim Estes

Claire Maxwell

Tammy Sharp

Tim Holden

Bill C. Spurlock, Director of Schools

1. CALL TO ORDER

The Board Chair, Tiffany Johnson called the meeting to order at 5:00 P.M.

2. PLEDGE OF ALLEGIANCE

The Pledge of Allegiance was led by Elizabeth Davis

3. MOMENT OF SILENCE

The Board Chair called for a moment of silence.

4. APPROVAL OF AGENDA

Motion made by Ms. Sharp, seconded by Mr. Estes, to approve the agenda as presented.

Vote: All Yes

Motion passes.

5. APPROVAL OF CONSENT AGENDA

A. Minutes: February 10, 2022 Board Meeting

B. Community Use of Facilities

C. Out of County Transfer Student (2)

D. Routine Bids: Bid #3574 – Floor Care Products

Bid #3576 – Tech Parts and Multimedia Equipment

Bid #3578 – Calculators

Bid #3580 – Clock System

Request for Approval:

Request for the Executive Committee to approve the emergency purchase of 6-compartment foam food trays because our awarded bidder can no longer provide these items at this time. This will be an ongoing bi-monthly purchase unless our awarded bidder can supply the product.

To be funded from the School Nutrition Department funds.

For Board Information Only:

The Purchasing Department would like to recognize Amazon for donating 35 pallets of bottled water to our schools and Central Office.

E. School Salary Supplements and Contract Payments:

Name	Amount	School	Funded By	Description
Andrew Feyka	NTE \$500.00	Blackman High	School Funds-AP	AP Support Teacher
Maranda Allen *1	NTE \$300.00	Blackman Middle	School Funds-Track	Track Meet Announcer
Elly Johnson *5	NTE \$300.00	Blackman Middle	School Funds-Track	Help at Track Meets
Katelyn Raymer *5	NTE \$300.00	Blackman Middle	School Funds-Track	Help at Track Meets
Steven Sellers *1	NTE \$300.00	Blackman Middle	School Funds-Track	Help at Track Meets
Morgan Evans *6	NTE \$2,500.00	Stewarts Creek High	School Funds-Variou Athletic Accounts	Bus Driver
Allison Glapa	NTE \$500.00	Stewarts Creek Middle	School Funds-Tournaments	Director of Basketball Tournament/Site Director

Phillip Nau	NTE \$600.00	Stewarts Creek Middle	Schools Funds-Tournaments	Clean Up/Clock for Middle School Sectional Basketball Tournaments
Heather Reedy	NTE \$1,200.00	Thurman Francis	Schools Funds-Dance	Coaching 4 Dance Teams
Jennifer Watts	NTE \$700.00	Whitworth Buchanan	School Funds-Archery	Assistant Archery Coach
Matthew Hunter	NTE \$1,800.00	Riverdale	School Funds-Theatre	Choreographer for Spring Musical – “Hairspray”
Michael Bivens	NTE \$1,000.00	Siegel	School Funds-Boys Soccer + Boys Soccer Boosters	Assistant/JV Soccer Coach
Nicholas Newby	NTE \$1,000.00	Siegel	School Funds-Boys Soccer + Boys Soccer Boosters	Assistant/JV Soccer Coach
Julie Glass *2	Hourly	Blackman Middle	School Funds-Track	Help at Track Meets
Tracy Harris *2	Hourly	Blackman Middle	School Funds-Track	Help at Track Meets

**Unless listed as an hourly rate

1. Approved previously for an amount \$500 or greater
2. Not less than regular hourly rate-or overtime rate if working over 40 hours during the week
3. Anticipate amounts over \$500 this school year
4. Amend prior approval
5. Less than \$500 but part of event total
6. Pending approval by Transportation Dept.

F. Non-Faculty Volunteer Coaches:

According to Tennessee Secondary School Athletic Association (TSSAA) guidelines, Board of Education approval is required to allow non-faculty volunteer coaches to participate in the school athletic programs.

The following non-faculty volunteer coaches are for the 2022-23 school year:

<u>Name</u>	<u>School</u>	<u>Sport</u>
Michael Bivens	Siegel High	Boys Soccer
Nicholas Newby	Siegel High	Boys Soccer
Madison Vanderhorst	Rockvale Middle	Softball
Brian Eady	Eagleville	MS Baseball
Shelby Mireles	Rockvale High	Softball
Jerry Gardner	Eagleville	MS Softball

Motion made by Mrs. Maxwell, seconded by Mrs. Bratton, to approve the consent agenda items as presented.

Vote: All Yes

Motion passes.

6. SPOTLIGHT ON EDUCATION

In December, Rutherford County Schools offered its first STREAM camp during winter break for students in grades K-5. Around 500 students participated, spread among almost all our elementary schools for this enrichment activity. The camps were part of our Accelerated Learning Plan. Elizabeth Davis, Coordinator of Learning Loss, presented information to the Board about the camps and the products our students created.

7. VISITORS

There were several visitors present for the meeting. Ms. Sexton addressed the board on concerns with bus safety and an accident involving her son. Mr. Littleton spoke on issues in schools with the Board.

8. CHARTER SCHOOL RESOLUTION LETTER

School Board Attorney, Jeff Reed presented a resolution letter at the request of Board member Coy Young to express concerns to legislature regarding charter schools.

Motion made by Mr. Young, seconded by Mr. Holden to approve the resolution letter and send it to legislature as presented.

Vote: All Yes except Ms. Sharp who opposed.

Motion passes.

9. EDUCATOR PREPARATION PROVIDER PROGRAM UPDATE

Rebecca Murphy, EPP Specialist shared some program successes for the Educator Preparation Provider Program.

10. CONTRACTUAL AGREEMENT WITH SPECIALIZED EDUCATION OF TENNESSEE, INC.

High Roads School of Nashville provides instructional support for students with a range of disabilities requiring behavioral support. This contract will be in addition to the other contracted services for behavioral needs for students needs which cannot be met by the other contract due to a lack of space or inability to provide the required services as determined by their student's individualized education plan (IEP).

Motion made by Mrs. Bratton, seconded by Mrs. Maxwell, to approve the contract with Specialized Education of Tennessee, INC. to be paid out of GP funds for the remainder of the 2021-2022 school year at the rate of \$207.00 per day per student with additional costs of \$113.00 per hour for services of Occupational therapy, Physical therapy, and/or Speech/Language therapy. Additional cost of \$181.00 per day for one to one assistant (as determined by the student's IEP) as presented.

Vote: All Yes

Motion passes.

11. ESL EXTENDED CONTRACTS

The ESL Department will continue writing curriculum units for newcomers and grades K-2 from March through July 2022. Twenty ESL teachers will be offered extended contracts for their work on these projects. The contracts will be funded through Title III funds. The approximate cost of the curriculum writing initiative will be \$25,000.

Motion made by Ms. Sharp, seconded by Mrs. Maxwell, to approve the Title III funded extended contracts for curriculum development for the ESL Program as presented.

Vote: All Yes

Motion passes.

12. LEGAL

POLICY CHANGES AND NEW POLICY

Below are the policy changes recommended by the policy committee on the second of two readings:

Policy Changes

a. Policy 1.400: School Board Meetings

Added guidelines for posters and materials from visitors during school board meetings. (sent back to Policy Committee for further deliberation from Board Meeting on 12/16/2021)

Motion made by Mrs. Bratton, seconded by Mrs. Maxwell, to approve the policy changes recommended by the policy committee for Policy 1.400 School Board Meetings as presented.

Vote: All Yes except Ms. Sharp who opposed.

Motion passes.

b. Policy 1.404: Appeals to and Appearances Before the Board

Made changes to the visitor process and decorum requirements in line with allowable and unallowable restrictions as established by the Sixth Circuit Court of Appeals.
(sent back to Policy Committee for further deliberation from Board Meeting on 12/16/2021)

Motion made by Mrs. Bratton, seconded by Mr. Estes, to approve the policy changes recommended by the policy committee for Policy 1.404, Appeals to and Appearances Before the Board as presented.

Vote: All Yes except Ms. Sharp who opposed.

Motion passes.

c. Policy 4.205: Enrollment in Advanced Courses

Added clarity to enrollment in advanced and college level course from State Board Policy.

Motion made by Mrs. Maxwell, seconded by Mr. Young to approve the policy changes recommended by the policy committee for Policy 4.205, Enrollment in Advanced Courses as presented.

Vote: All Yes

Motion passes.

d. Policy 5.602: Staff Time Schedules

Changes language to state that a supervisor has authority to have an employee use compensatory time hours before overtime pay.

Motion made by Ms. Sharp, seconded by Mr. Holden to approve the policy changes recommended by the policy committee for Policy 5.602, Staff Time Schedules as presented.

Vote: All Yes

Motion passes.

e. Policy 6.411: Student Wellness

Adds language from TCA 49-6-1021 to state amount of time required for physical activity.

Motion made by Ms. Sharp, seconded by Mr. Young, to approve the policy changes recommended by the policy committee for Policy 6.411, Student Wellness as presented.

Vote: All Yes

Motion passes.

New Policies

a. Policy 1.1021: Student Member of the Board

Adds a student representative and deputy student representative to the Board.

Motion made by Mrs. Maxwell, seconded by Mr. Young to table Policy 1.1021, Student Member of the Board, to the next board meeting in order to clarify some information as presented.

Vote: All Yes

Motion passes.

13. FINANCIAL MATTERS

1. GPS Fund Budget Amendment for additional State Pre-K Grant Funding

This amendment budgets for an additional appropriation of State Pre-K grant funding that was awarded to Rutherford County for the current fiscal year. This additional grant award will fund one additional Pre-K teacher and EA at both Christiana Elementary and Wilson Elementary Schools as well as fund additional Pre-K instructional supplies and other Pre-K classroom equipment.

Motion made by Mr. Estes, seconded by Mr. Young, to approve the amendment for the FY 2021-22 General Purpose School Budget as presented for a total of \$177,411 to budget for additional Pre-K grant funding as presented.

Vote: All Yes

Motion passes.

2. Centralized Cafeteria Fund Budget Amendment for additional Supply Chain Assistance Grant and additional USDA Seamless Summer Program reimbursement, as well as Fund 143 revenue budget clean up

This amendment budgets an additional \$3,912,879 in USDA Seamless Summer Program reimbursement along with a \$974,121 Federal NSLP Supply Chain Assistance Grant. Expenditure increases in Food Service for increases in food preparation and food costs along with contracted services for maintenance on equipment, delivery fees and remodeling of cafeteria serving areas. Additional funding of \$600,000 for needed replacement of fully depreciated/aged food prep equipment in multiple RCS school kitchens including the replacement of a 33-year-old stove at McFadden School.

This amendment also cleans up revenue line items to reflect the continuance of the USDA Seamless Summer Program for the remainder of the Fiscal Year 2021-22. At this time, the USDA has stated they prefer that the National School Lunch Program return to its regular serving method next year (i.e. return to traditional pricing method for breakfast and lunch programs).

Motion made by Mr. Young, seconded by Mrs. Maxwell, to approve the Fund 143 budget amendment as presented to increase revenues, as well as expenditures by \$4,887,000 as presented.

Vote: All Yes

Motion passes.

14. FACILITIES

Rockvale High School Request for Concrete Batting Cage

Principal Steve Luker and the Rockvale High Baseball team have made a request to add a concrete pad for a batting cage. Engineering and Construction has reviewed the request, and the location, and finds it acceptable. The request is at no cost to the Board.

Motion made by Mrs. Maxwell, seconded by Mr. Holden, to approve the Rockvale High Baseball Batting Cage concrete at no cost to the Board as presented.

Vote: All Yes

Motion passes.

15. INSURANCE UPDATE

Dr. Anthony stated there was an insurance committee meeting held today discussing current insurance plans versus state plans. There will likely be a decision at the end of March as to stay with Cigna or move to the state department.

16. DIRECTORS UPDATE

The Director spoke on Governor Lee's funding formula giving some ideas and projections. Once the information has been received, the Director will provide it to the Board.

17. TENNESSEE LEGISLATIVE NETWORK (TLN) UPDATE

Mrs. Maxwell gave information on Gov. Bill Lee's unveiling of the new school funding formula, focusing money directly on students. The plan will allocate \$9 billion in state and local funds toward education for students with specific needs. In this plan, no school district would receive less than they currently do now, provided there is stable enrollment. The new plan would replace the state's Basic Education Program.

18. FEDERAL RELATIONS NETWORK (FRN) UPDATE

Nothing new at this time.

19. GENERAL DISCUSSION

Mrs. Maxwell spoke on concerns with electronic time keeping. She asked if this item could be put on the agenda at the next board meeting and voted on at that time as to keep the biometric time keeping system or not. The Director as well as the Board agreed.

Mr. Lee addressed issues and procedures regarding the bus accident that was discussed earlier in the meeting. Mr. Lee went through the timeline and series of events that took place when the accident occurred.

There being no further business, the meeting adjourned at approximately 6:20 P.M.

Tiffany Johnson, Board Chairwoman

Date

Bill C. Spurlock, Director of Schools

Date

FACILITIES USE

March 10, 2022

Fees

Blackman High	4EO, basketball practices, 3/8/22 6-7pm, gym, \$18/hr, <i>Retroactive review, *subject to COVID-19 restrictions and updates.</i>
John Colemon Elementary	Mad Skills Sports, AAU girls basketball practices, 3/10/22-5/26/22 M/T/Th 6-8pm, gym, \$18/hr, <i>*subject to COVID-19 restrictions and updates.</i>
Oakland Middle	Dance Classics, dance recital, 6/3/22 (1:30-9pm)-6/4/22 (8:30-7pm), band room and auditorium, \$600, <i>*subject to COVID-19 restrictions and updates.</i>
Riverdale	United States Eastern Wado-Ryu Federation, martial arts tournament, 3/25/22-3/26/22 4-6pm, gym, \$290/day, <i>*subject to COVID-19 restrictions and updates.</i>
Rock Springs Elementary	Fine Arts Matter, music classes, 3/10/22-5/6/22 Fridays 2:30-3:20pm, classrooms B05 & B02/Library, \$540, <i>*subject to COVID-19 restrictions and updates.</i>
Roy Waldron Elementary	Carpe Artista, theatre rehearsal, 2/15/22-5/24/22 Tuesdays & some Fridays 6-8:30pm, gym, \$18/hr, <i>Retroactive review, *subject to COVID-19 restrictions and updates.</i>
Siegel High	SoZo Dance Academy, dance recital, 5/25/22-5/28/22 Wed: 4-6pm/Th: 3:30-9:30pm/Fri: 4:30-9:30pm/Sa: 10am-10pm, 2 classrooms/2 days & auditorium/4 days, \$1200, <i>*subject to COVID-19 restrictions and updates.</i>
Smyrna Elementary	National Inventors Hall of Fame-Camp Invention, science camp -camp invention, 6/6/22-6/10/22 7:30am-5:30pm, 2 classrooms 317 & 316 (STEM lab), \$150, <i>*subject to COVID-19 restrictions and updates.</i>

No Fees

Christiana Middle

Christiana Baseball & Softball Association, baseball and softball leagues seasons', 3/10/22-8/1/22 6-10pm, softball field, No Fee, ****subject to COVID-19 restrictions and updates.***

Note: Facility use for 3/10/2022 has been granted pending Board action. The COVID-19 CDC approved recommendations were reviewed by the requestor. A certificate of insurance with \$2,000,000.00 limits (\$1,000,000.00 if approved) is required by each user. Each group must forward any renewals of insurance to the Board on time; otherwise approval is terminated at the end of the policy period. **All approvals are for no more than a 1-year period.**

Bid #3577 - Lexmark Printers

Item Number	Part Number	Description	CDW-G	Databit Inc.	Princeton Services	Troxell	vPrime Tech
Lexmark Monochrome Printers							
1	29S005 + 2371849	MS431dn w/ Upgrade to 1yr Onsite Repair	\$ 310.00	\$ 358.64	\$ 330.97	\$ 326.61	\$ 369.95
2	36S0300 + 2361945	MS521dn w/ Upgrade to 1yr Onsite Repair	\$ 575.00	\$ 612.54	\$ 587.54	\$ 589.85	\$ 609.43
3	50G0100 + 2363264	MS821dn w/ Upgrade to 1yr Onsite Repair	\$ 910.00	\$ 1,025.09	\$ 978.60	\$ 997.77	\$ 1,049.10
4	29S0150 + 2371984	MX331adn Multifunction w/ Upgrade to 1yr Onsite Repair	\$ 410.00	\$ 496.66	\$ 464.52	\$ 431.61	\$ 511.64
5	25B0001	MX722adhe Multifunction	\$ 2,850.00	\$ 3,518.32	\$ 3,400.21	\$ 2,985.36	\$ 3,607.34
6	25B0610	MX826ade Multifunction	\$ 3,850.00	\$ 4,970.27	\$ 4,843.22	\$ 4,104.67	\$ 5,138.25
Options & Accessories							
7	29S0600	550 Sheet Tray for Lexmark MS431	\$ 140.00	\$ 152.36	\$ 144.33		\$ 151.13
8	36S2910	250 Sheet Tray for Lexmark MS521, MX331	\$ 85.00	\$ 141.54	\$ 135.96	\$ 73.11	\$ 140.76
9	50G0802	550 Sheet Tray for Lexmark MS821, MX722	\$ 245.00	\$ 267.70	\$ 262.45	\$ 251.52	\$ 265.13
10	25B2900	550 Sheet Tray for Lexmark MX826	\$ 125.00	\$ 269.70	\$ 259.74		\$ 272.76
11	50G0849	Hole Punch Finisher for MX826ade	\$ 482.00	\$ 638.13	\$ 630.13	\$ 500.29	\$ 654.88
Warranty Options							
13	2371851	Add'l 1 Year OnSite Repair – Lexmark MS431dn	\$ 38.00	\$ 38.50	\$ 35.42		\$ 39.00
14	2361946	Add'l 1 Year OnSite Repair – Lexmark MS521dn	\$ 80.00	\$ 23.59	\$ 21.22		\$ 95.04
15	2363265	Add'l 1 Year OnSite NBD Repair – Lexmark MS821dn	\$ 90.00	\$ 85.56	\$ 14.14		\$ 80.98
16	2371985	Add'l 1 Year OnSite Repair – Lexmark MX331	\$ 50.00	\$ 53.42	\$ 14.14		\$ 51.56
17	2363694	Add'l 1 Year OnSite NBD Repair – Lexmark MX722	\$ 350.00	\$ 359.70	\$ 15.58	\$ 329.67	\$ 330.23
18	2363846	Add'l 1 Year OnSite NBD Repair – Lexmark MX826	\$ 350.00	\$ 359.70	\$ 324.74	\$ 329.67	\$ 330.23
Lexmark Color Printers							
19	40N9320	CS431dw	\$ 395.00	\$ 489.06	\$ 439.60		\$ 478.58
20	40C9000	CS725de	\$ 1,350.00	\$ 1,416.65	\$ 1,368.89	\$ 1,372.64	\$ 1,422.44
21	32C0001	CS923de	\$ 2,995.00	\$ 3,946.64	\$ 3,891.93	\$ 3,099.44	\$ 3,959.95
22	42K0041	CX825dte	\$ 3,695.00	\$ 4,952.49	\$ 4,788.78		\$ 5,080.51

Bid #3577 - Lexmark Printers

Item Number	Part Number	Description	CDW-G	Databit Inc.	Princeton Services	Troxell	vPrime Tech
Options & Accessories							
26	40N4250	250 Sheet Tray for CS431dw	\$ 135.00	\$ 144.86	\$ 439.60		\$ 141.30
27	40C2100	550 Sheet Tray for CS725	\$ 125.00	\$ 327.45	\$ 321.57		\$ 328.17
28	32C0050	2x 500 Sheet Tray for CS923	\$ 995.00	\$ 1,384.99	\$ 1,366.67	\$ 1,088.38	\$ 1,420.33
29	40C2300	Adjustable Caster Base	\$ 305.00	\$ 413.63	\$ 324.78	\$ 338.99	\$ 330.51
30	47B1103	Multi-position Staple Punch Finisher (LV Tall) for CX825	\$ 1,350.00		\$ 1,351.42		
Warranty Options							
32	2371433	Add'l 1 Year OnSite NBD Repair – Lexmark CS431	\$ 45.00	\$ 46.29	\$ 47.76		\$ 45.61
33	2360121	Add'l 1 Year OnSite NBD Repair – Lexmark CS725de	\$ 185.00	\$ 171.67	\$ 154.95	\$ 164.84	\$ 158.25
34	2361577	Add'l 1 Year OnSite NBD Repair – Lexmark CS923de	\$ 395.00	\$ 469.39	\$ 423.79	\$ 384.82	\$ 430.95
35	2359998	Add'l 1 Year OnSite NBD Repair – Lexmark	\$ 450.00	\$ 555.55	\$ 501.63	\$ 412.09	\$ 508.44

Mailed to 99 vendors

94 vendors did not respond

Recommend: Motion to award to CDW-G for overall lowest and best bid as shown.

To be funded through Building Program, Individual Schools, Federal, or GP.

Bid #3583 - Drainage at Baseball/Courtyard Area (Oakland High)

Bidder	Base Bid
Jarrett Builders, Inc.	\$ 79,100.00
Williamson Construction	\$ 38,640.00

Mailed to 36 vendors

34 vendors did not respond

Recommend: Motion to approve to Williamson Construction for overall lowest and best bid.

To be funded from General Funds

Bid #3584 - USDA Commodities

ITEM No.	PRODUCT DESCRIPTION	Don Lee Farms	Integrated Food Service	JTM Provisions Co., Inc.	Tyson
BEEF					
1	BEEF - BURGER 100% BEEF, IQF, FLAMEBROILED FULLY COOKED, NOT MORE THAN 20% FAT, CN LABEL TO EQUAL 2 OZ M/MA	\$ 0.81	\$ 0.79	\$ 0.75	\$ 0.80
2	BEEF - PATTY W/ ISP; FULLY COOKED, IQF, , NOT MORE THAN 20% FAT CN LABEL TO EQUAL 2 OZ M/MA	\$ 0.74	\$ 0.67	\$ 0.58	\$ 0.71
3	BEEF - BURGER, LARGE, 100% BEEF, IQF, FULLY COOKED, CHAR MARKS, NOT MORE THAN 20% FAT CN LABEL TO CREDIT A MINIMUM OF 2.5 OZ M/MA	\$ 1.07	\$ 1.07	\$ 0.94	\$ 1.03
4	BEEF - MEATBALL, FULLY COOKED, 100% BEEF, NO MORE THAN 20% FAT, 5 = 2 OZ. M/MA	\$ 0.81	\$ 0.79	\$ 0.62	\$ 0.75
5	BEEF-SHAVED, FULLY COOKED SEASONED STEAK, GLUTEN FREE, CN LABEL ,STATE AMOUNT TO CREDIT 2 OZ CN M/MA				\$ 1.14
6	BEEF SALISBURY STEAK, MUST MEET 2 OZ M/MA, NO MSG OR DRIED EGGS.	\$ 0.77		\$ 0.77	\$ 0.71
7	BEEF STEAK, WHOLE GRAIN BREADED, BREAKFAST, OVENABLE, 100 % BEEF STEAK FOR BISCUIT, MUST MEET 1 OZ M/MA, SUITABLE FOR BISCUIT INSERT				\$ 0.48
8	BEEF, FINGERS/BITES, FULLY COOKED, BREADED, STATE SERVING TO MEET 2 M/MA	\$ 1.01			\$ 0.93
9	BEEF, SLOPPY JOE, SAUCE WITH BEEF, MUST PROVIDE 2 M/MA AND 1/8 CUP RED/ORANGE VEGETABLE.			\$ 0.64	
10	BEEF, SPAGHETTI SAUCE WITH BEEF, MUST PROVIDE 2 M/MA AND 1/2 CUP RED/ORANGE VEGETABLE			\$ 0.85	

Bid #3584 - USDA Commodities

ITEM No.	PRODUCT DESCRIPTION	Don Lee Farms	Integrated Food Service	JTM Provisions Co., Inc.	Tyson
11	BEEF, TACO FILLING, MUST PROVIDE 2 M/MA AND 1/8 CUP RED/ORANGE VEGETABLE.			\$ 0.51	\$ 0.49

Recommend: Motion to award Beef to JTM and Tyson as overall best line item as shown above.

To be funded through the School Nutrition Department.

Bid #3584 - USDA Commodities

ITEM No.	PRODUCT DESCRIPTION	*Gold Creek Foods	Tyson	**Yangs 5th Taste	
CHICKEN GROUP					
1	CHICKEN BREAST FILET , BREADED, MADE WITH WHOLE MUSCLE, BREAST WITH RIB MEAT, MUST MEET 2 OZ M/MA	\$ 0.76	\$ 0.76		
2	CHICKEN PATTY MADE W/ WHOLE MUSCLE, WHOLE GRAIN, HOT AN SPICY , MUST MEET 2 OZ M/MA	\$ 0.77	\$ 0.78		Gold Creek inconsistant quality
3	CHICKEN PATTY MINI, BREAKFAST WHOLE MUSCLE, SUITABLE FOR BISCUIT INSERT, MUST MEET 1 OZ M/MA, 1/2 OZ GR EQ	\$ 0.39	\$ 0.43		Gold Creek inconsistant quality
4	CHICKEN TENDERLOIN , WHOLE MUSCLE, MUST MEET 2Z M/MA, 1Z GR EQ	\$ 0.81	\$ 0.99		Gold Creek inconsistant quality
5	CHICKEN BREAST CHUNKS, MADE WITH WHOLE MUSCLE, STATE SERVING SIZE TO MEET 2 OZ M/MA	\$ 0.75	\$ 0.78		Gold Creek inconsistant quality
6	CHICKEN BREAST, BITES, BREADED, HOMESTYLE , MADE WITH WHOLE MUSCLE, STATE SERVING SIZE TO MEET 2 OZ M/MA,	\$ 0.75	\$ 1.01		Gold Creek inconsistant quality
6.1 ALT	CHICKEN BREAST, NUGGET		\$ 0.70		
CHICKEN - BONE IN DARK MEAT					
7	CHICKEN, DRUMSTICK, WHOLE GRAIN BREADED, DARK MEAT, 1 DRUMSTICK MUST MEET 2 OZ M/MA	\$ 0.92	\$ 0.93		Gold Creek inconsistant quality
8	CHICKEN, DRUMSTICK, FULLY COOKED, WITH SAUCE, DARK MEAT, 1 DRUMSTICK MUST MEET 2 OZ M/MA	0.82	See below options for Spicely or BBQ		
8.1 ALT	Tyson - Spicely		\$ 1.17		
8.1 ALT	Tyson - Alternative BBQ		\$ 0.95		

Bid #3584 - USDA Commodities

ITEM No.	PRODUCT DESCRIPTION	*Gold Creek Foods	Tyson	**Yangs 5th Taste	
	CHICKEN, THIGH, BREADED		\$ 1.18		
OTHER CHICKEN- DARK MEAT OPTION					
9	CHICKEN, POPCORN STYLE CHUNKS, WHOLE MUSCLE DARK MEAT, WGR, STATE SERVING SIZE TO MEET 2 OZ M/MA	\$ 0.83		\$ 0.80	Not awarding this item
10	CHICKEN UNBREADED STRIPS, DARK MEAT, STATE SERVING SIZE TO MEET 2 OZ M/MA, CONTAINS NO ALLERGENS	\$ 0.62	\$ 0.61		
12	CHICKEN, CORN DOG, WGR BATTER, UNCURED CHICKEN FRANKS, DARK MEAT. STATE SERVING SIZE TO MEET 2 M/MA & 2 Z GRAIN EQ		\$ 0.66		
	CHICKEN, TACO		\$ 0.50		
CHICKEN - NATURAL PROPORTION-WHITE & DARK MEAT OPTION					
13	CHICKEN, POPCORN STYLE, NATURAL PROPORTION, STATE SERVING SIZE TO MEET 2 OZ M/MA	\$ 0.71	\$ 0.48		
14	CHICKEN PATTY BREADED, NATURAL PROPORTION, MUST MEET 2 OZ M/MA	\$ 0.43	\$ 0.41		

Recommend: Motion to award Chicken to Tyson as overall best line item as shown above.

*Gold Creek disqualified for quality issues

**Yangs 5th Taste disqualified for poor taste

To be funded through the School Nutrition Department.

Bid #3584 - USDA Commodities

ITEM No.	PRODUCT DESCRIPTION	DON LEE	Nicks BBQ	JTM	Tyson
PORK GROUP					
1	PORK, CHOP PATTY FULLY COOKED, WG BREADED, NO MORE THAN 20% FAT, NO TRANS FAT, MUST BE CN OR PFS. SERVING SIZE MUST MEET 2Z M/MA AND 1/2 Z GR EQ.	\$ 0.62		\$ 0.62	\$ 0.76
2	Pork, Whole Muscle, Fully Cooked, Pulled, Pure, No Extender. Hand Pulled from Shoulder Meat and Hams or Boston Butt. Not Chopped or Shredded, Semi-dry. CN Labeled, One serving must meet minimum of 2 oz. meat/meat alternate		\$ 0.69		
3	Pork, Whole Muscle, Fully Cooked, Pulled, Pure, No Extender in Texas (Red) Sauce. Hand Pulled from Shoulder Meat and Hams or Boston Butt. Not Chopped or Shredded, Semi-dry. CN Labeled, One serving must meet minimum of 2 oz. meat/meat alternate		\$ 0.69		

Recommend: Motion to award Pork to Nick's BBQ and JTM as overall best line items as shown above.

To be funded through the School Nutrition Department.

Bid #3589 - Synthetic Football Turf (Smyrna High)

Company	Base Bid
Warner's Athletic Construction Co., LLC	\$850,477.22

Mailed to 44 vendors
43 vendors did not respond

*Warner's will donate \$50,000

Recommend: Motion to approve Warner's Athletic Construction Co., LLC the lowest and best bid as

To be funded through Donations and School Funds

For your information:

Rutherford County Schools intends to purchase from Education Networks of America Inc./ENA Services, LLC Wide Area Network (WAN) and internet access services, pursuant to the Tennessee Education Broadband Consortium (TEBC) statewide master contract #68881 Education Networks of America, for a period of July 1, 2022 - June 30, 2025 with one 12 month voluntary extension.



Smyrna High School

100 BULLDOG DRIVE
SMYRNA, TENNESSEE 37167
PHONE (615) 904-3865

DR. SHERRI SOUTHERLAND
Principal

Request from Smyrna High School to Turf Football Field

1. Smyrna High School is asking for permission from the Rutherford County School Board to put artificial field turf on their football field. The project will be funded in full by Smyrna Ready Mix. Smyrna Ready Mix will make the donation payment out directly to Rutherford County Schools. The check will be receipted at the central office and deposited directly into the county trustee accounts.
2. The total amount that Smyrna Ready Mix has agreed to for this project is \$1,000,000. This will cover the total cost of the turf project as well as any other costs that arise during the project. Proposed costs for the project add up to approximately \$900,000.
3. Smyrna High School has a sports facilities improvement fund set up currently with \$67,000 in it. Smyrna High will use this account for the sustainability/turf replacement-money that will be raised with future sports sponsorships//pledges.
4. Smyrna High School will have all responsibility for field replacement, maintenance, and repair.
5. Smyrna High School will work with Finance Director Doug Bodary to prepare a bid process.
6. Smyrna High School is not requesting any funds from Rutherford County Schools.



Smyrna High School
Football
Field Synthetic Turf Installation

BUDGETARY

February 2, 2022

O-615-459-6993 M-615-430-6664 F-615-459-6983

www.warnersathletic.com

DESCRIPTION OF PROPOSED CONSTRUCTION PROJECT

Warner's Athletic Construction ("WAC") proposes, based on our discussions to provide and install approximately 99,000 sq. ft. on the **Game Football Field** with Shaw- Legion HP 2.0 synthetic turf with a sand/ crumb rubber infill. Turf will be delivered in 15' wide rolls. The scope for all work and materials for the turf installation is as follows:

WAC SCOPE OF WORK FOR INSTALLING SYNTHETIC TURF ON THE FOOTBALL FIELD:

- Excavate existing soils 8"-12" deep and remove the existing vegetation and soils to a location on campus. WAC can remove spoils from site for additional cost.
- Establish subgrade at +/-1/2".
- Install a pressure treated 2x4 nailer board to the existing curb inside the track to secure the turf.
- Install 10" perimeter drain and tie into the existing field drainage grates.
- Cover the existing drain grates with steel plates.
- Install geo-textile liner on the sub-grade as a barrier between the soil and the stone.
- Install, laser grade and compact 4" of a washed #57 limestone base material.
- Install, laser grade and compact 2" of a washed #89 limestone base material.
- Install green and Shaw- Legion HP 2.0 synthetic turf. Colors TBD.
- Install numbers, 2-color logo to midfield and end zones letters.
- WAC will provide a 1-year workmanship warranty on base. Shaw Sports Turf will provide a manufacturer's turf warranty of 8 years.

MATERIALS PROVIDED BY WAC:

- All sub and base materials.
- All turf and infill materials.
- All materials/ equipment necessary for installation.
- WAC will provide all Shaw sports turf synthetic turf system.

CLIENT RESPONSIBILITIES:

- Provide adequate drainage structures to tie in trunk lines.
- Contract should be provided and mutually agreeable to both parties.
- Provide reasonable and clear access to the job site during the hours from 7am to 7pm.
- Provide parking on location.
- Allow for work on the site on all days (including Saturday and Sunday) permitted by local ordinance.
- Obtain any required permits when applicable for the construction project as defined herein and provide copies to WAC prior to construction.
- Provide adequate staging area and access to the job site.

ASSUMPTIONS:

- Existing inner curb of track is adequate for nailer board.
- Location to dump/ store all spoils to extend the existing practice field.
- All asphalt entrances, parking lots and roads are installed at thickness to handle the pressure of several dump trucks loaded with approximately 70,000#s. WAC is not responsible for repairing damaged asphalt from the construction process.
- Existing drain structures are adequate.

EXCLUSIONS

- **Bond, Permits and Taxes** not included.
- Assumes all access roads can withstand the stress of construction traffic. WAC is not responsible for the repairs of any campus access roads or streets.
- Off field Drainage costs. Any additional pipe or structures beyond the perimeter of each field.
- Off field Irrigation repairs and re-routing the main water lines from under the perimeter of each field and to irrigate the common areas between the fields.
- Any surface drain culverts.
- Proposal assumes appropriate digging conditions. Unsuitable soils or excessive rock structures will be removed and replaced at an additional cost.
- Repair of any work completed by WAC but damaged by another contractor will be repaired at an additional cost.

WORK COMPLETED BY WAC BEYOND DESCRIBED SCOPE

The Client may, from time to time, request changes in the scope of the services of WAC to be performed under this Agreement. Such changes, including any increase or decrease in the amount of WAC compensation, will be mutually agreed upon by and between the Client and WAC prior to the work commencing. Such changes shall be incorporated into a Change Order that will be signed by the Client and WAC and will become a part of this Agreement.

PROPOSED COSTS FOR PROJECT

TOTAL: \$771,722.00

OPTIONS:

*Legion Pro 2.0 Upgrade	+\$40,000.00
* Deduct if stone is donated:	- \$50,000.00
* 25 yard line Logo 3 colors 15' x15'	\$6,500.00/each

**** Shaw Sports Turf Legion HP is the turf product that is currently installed, on the game and practice fields, at Vanderbilt University and MTSU.**

PAYMENT SCHEDULES

25% initial billing upon commencement of project for mobilization and materials to site

50% upon completion of drains, curbs, aggregate installation and upon turf arrival

20% upon completion of turf install

5% upon completed punch list

Payments made to: Warner's Athletic Construction
570 Huntly Industrial Drive
Smyrna, Tennessee 37167

PRICING AND INFORMATION DISCLAIMER

This proposal and all pricing herein are intended only for the Client identified in this document, and any and all pricing information shall remain confidential between Warner's Athletic Construction and the Client aforementioned. Pricing is valid for thirty (30) days from the issuance of the proposal to Client.

ACCEPTANCE

By signing below, I agree to all the terms listed herein. Upon completion of project any unpaid balance due on account is subject to an 18% annual late charge or service charge. In the event WAC institutes legal proceedings to collect any remaining balance on project, or company needs to retain counsel, collection agency or undergo any other expense to collect balance due, the undersigned agrees to pay for attorney fees, court costs, collection fees, filing fees, etc.

Smyrna High School

By:

Date:

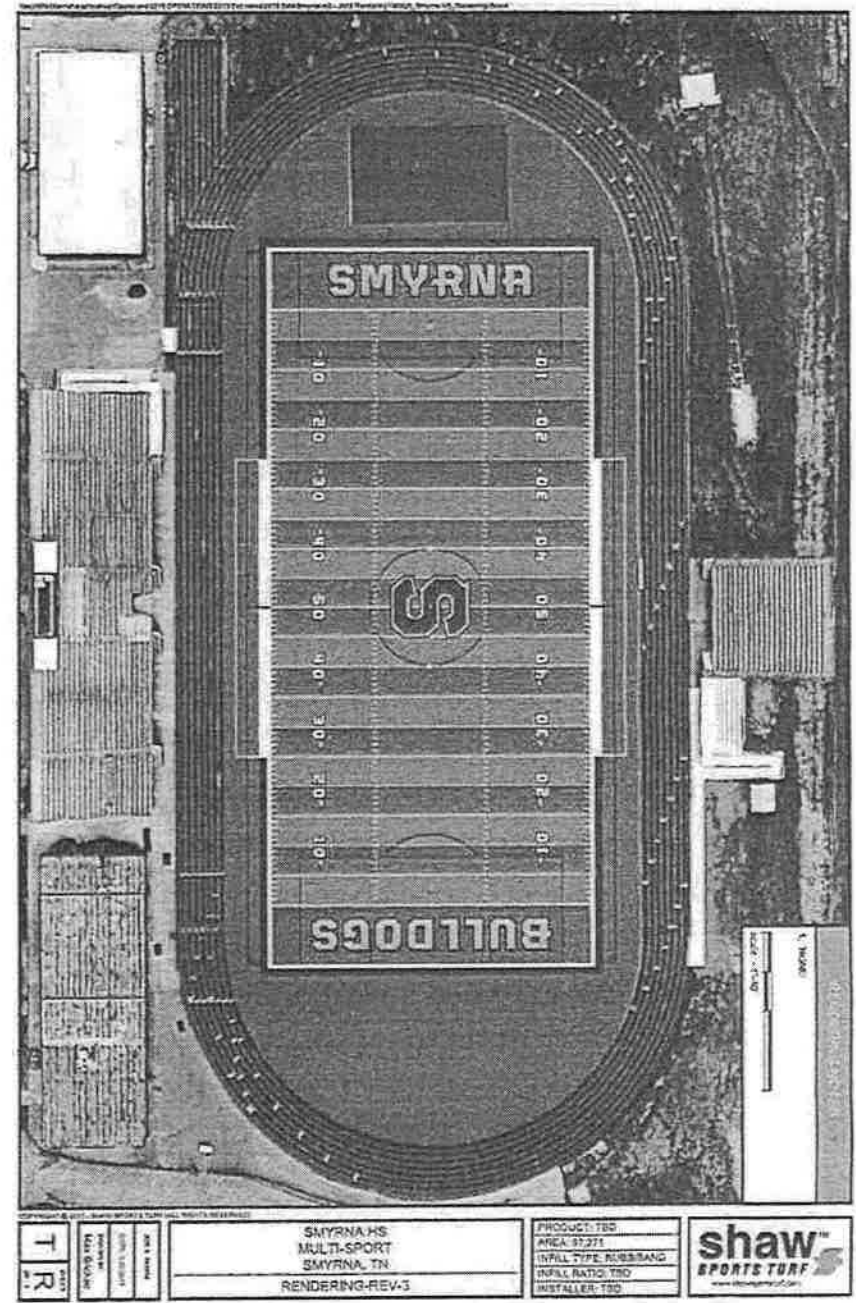
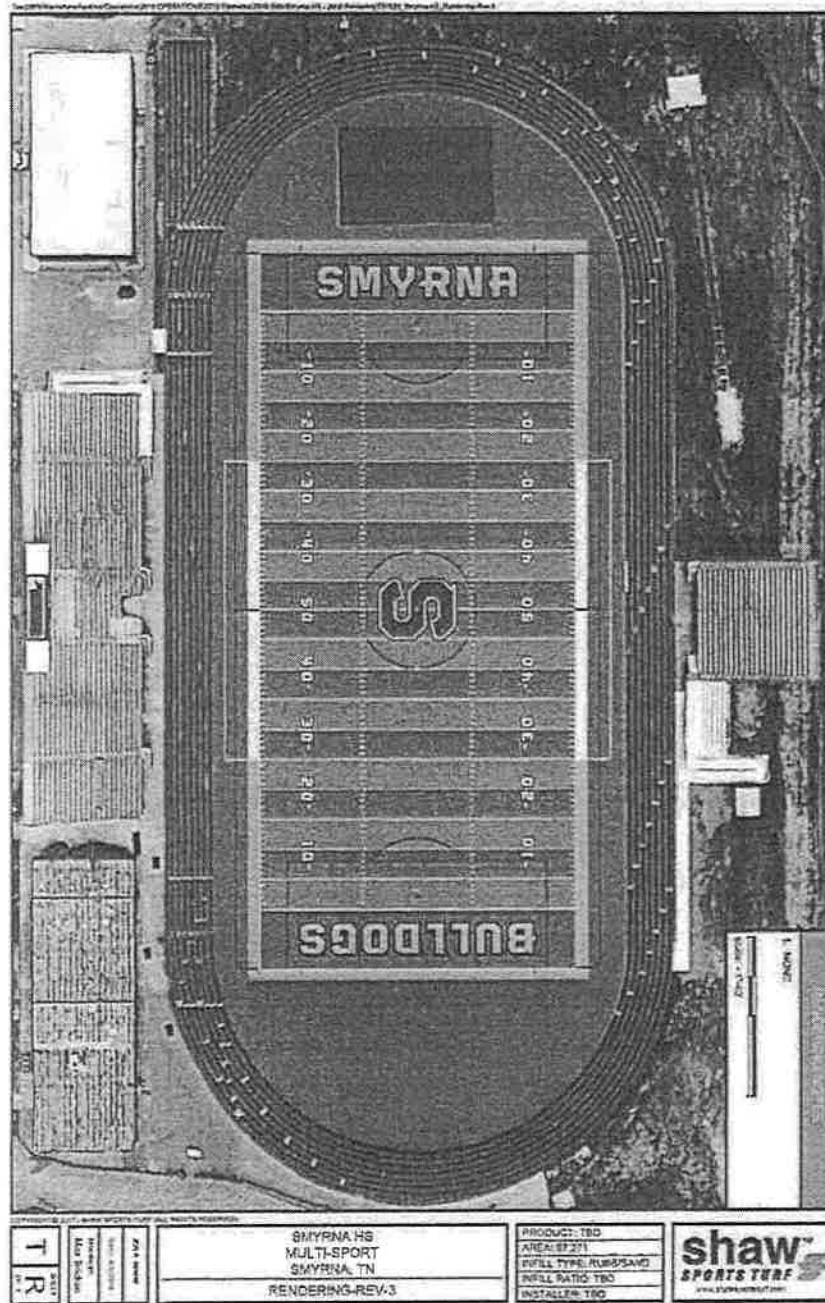
Its:

Warner's Athletic Construction

By: Lou Warner/ Russ Russell

Date:

Its: President/ Vice President



Rutherford County Schools						
2021/22 Fund 177 Budget						
Major Capital Projects						
Budget Amendment						
				3/10/2022		
			Smyrna Turf	Amendment #4		
Object	Description	Amended Budget	Decrease	Increase	Amended Budget	
34685	Comm for Capital Proj.	5,063,287	0.00	0	5,063,287	
Revenues:		Amended Budget	Decrease	Increase	Amended Budget	
44570	Contributions & Gifts	0	0	1,000,000	1,000,000	
Total Revenue & Operating Transfers		8,870,437	-	-	9,870,437	
Object	Description	Amended Budget	Increase	Decrease	Amended Budget	
399	Other Contracted Services	0	1,000,000	0	1,000,000	
	Total Education Capital Projects	10,347,949	1,000,000	-	11,347,949	
Smyrna High School is asking for permission from the Rutherford County School Board to install artificial turf on the Smyrna High School football field.						
This project will be 100% funded by donations and will be budgeted and accounted for in the county Educational Capital Projects Fund						
as Smyrna High School does not have a legally separate football booster club						
Recommended Motion: to accept the generous donation of Smyrna Ready Mix, to approve the artificial turf project						
as presented for the project at Smyrna High School, as well as approve the budget amendment to Fund 177						
to budget this capital project.						

PINNACLE BUILDING SERVICES

ESTIMATE

217 South Cannon Avenue, Murfreesboro, TN 37130 Office: (615) 907-1363 Cell: (615) 481-7349

ESTIMATE FOR:

Rutherford County Board of Education

2240 Southpark Boulevard

Murfreesboro, TN 37128

(615) 893-5812

DATE: March 9, 2022

Agent: Tony Faulk / Trey Lee

School: N. Ruth. Teacher Center

PO #

RE: Roof Repairs Quotation (Per Tony F.) -- Due to Damage / Leaks

DESCRIPTION	QUANTITY	PRICE	AMOUNT
Roof Repairs to be Performed: (Per Contract)			\$ -
EPDM Roof Replacement -- Black	60.00	\$ 425.00	\$ 25,500.00
Pipe Flashing (2"-8") -- Black	5.00	\$ 45.00	\$ 225.00
Termination Bar	100.00	\$ 1.56	\$ 156.00
Wall Flashing (Stress Strip Req.)	248.00	\$ 6.09	\$ 1,510.32
Curb Flashing (8"-12") -- Black	220.00	\$ 10.40	\$ 2,288.00
Seam Flashing	748.00	\$ 2.88	\$ 2,154.24
Per Lft. of perimeter flashing - 12" (Insulation, Drip, etc.)	311.00	\$ 12.50	\$ 3,887.50
Per Lft. of Gutter Cleaning	278.00	\$ 1.50	\$ 417.00
			\$ -
			\$ -
			\$ -
SUBTOTAL			\$ 36,138.06

DESCRIPTION	QUANTITY	PRICE	AMOUNT
Roof Repairs to be Performed: (Per Contract)			\$ -
Shingles (Incl. Roofing Felt)	50.60	\$ 192.00	\$ 9,715.20
Perimeter Flashing -- 48"	529.00	\$ 21.50	\$ 11,373.50
Pipe Flashing (2"-6") -- Asphalt	1.00	\$ 13.00	\$ 13.00
Per Lft. of Gutter Cleaning	201.00	\$ 1.50	\$ 301.50
			\$ -
			\$ -
			\$ -
SUBTOTAL			\$ 21,403.20
TOTAL			\$ 57,541.26
PROJECT TOTAL			\$ 57,541.26

Payment should be rendered in full upon completion.

THANK YOU FOR YOUR BUSINESS!

				Amended			Budget after			Total		
				Budget	Amendment	Amendment	Amendment	Spent	Encumbered	Spent +	Remaining	
				3/2/2022	#4	#5		3/2/2022	3/2/2022	Encumbered	3/2/2022	
2021 / 2022 Projects												
Major Roofing												
Thurman Francis		821	TF3	350,000		(57,542.00)	292,458.00	210,192.96	-	210,192.96	82,265.04	
North Rutherford Teacher Center		821	TEA			57,542.00	57,542.00			-	57,542.00	
				-			-			-	-	
			Total	350,000	-	-	350,000.00	210,192.96	-	210,192.96	139,807.04	
Turf for Football Field												
Smyrna High School	(From Contributions)		SH1	-	1,000,000.00		1,000,000.00				1,000,000.00	
			Total of above	6,193,167.00	1,000,000	-	7,193,167.00	2,531,869.80	1,526,991.45	4,058,861.25	3,134,305.75	
				-								
				-								
				-								
			2021 / 2022 Capital Projects Total	7,633,917	1,000,000.00	-	8,633,917.00	2,647,856.05	1,861,708.10	4,509,564.15	4,124,352.85	
			Total Capital Projects	10,347,948.99	1,000,000.00	-	11,347,948.99	4,589,515.11	2,525,200.61	7,114,715.72	4,233,233.27	



SMYRNA HIGH SCHOOL

"Pride, Tradition and Excellence"

Dr. Sherri Southerland
Principal

Mr. Billy Harris
Vice-Principal

Mr. Steven Lay
Vice-Principal

Mr. Mike Messerly
Vice-Principal

Mrs. Nicole Takayama
Vice-Principal

March 3, 2022

To: Mr. Bill Spurlock

From: Dr. Sherri Southerland, Mr. Matt Williams

Dear Mr. Spurlock,

We are requesting that you, as Director of Schools, recommend that the football field at Smyrna High School's Robert L. Raikes Stadium, be named after Smyrna Ready Mix. The facility would be called the Smyrna Ready Mix field at Robert L. Raikes Stadium. Mike Hollingshead, Jeff Hollingshead, and Ryan Hollingshead of Smyrna Ready Mix have generously agreed to fully fund the installation of a new synthetic playing surface at Smyrna High School in addition to funding the expansion and renovation of the football field house. Because of this extraordinary contribution, we believe it is appropriate to name the football field after Smyrna Ready Mix. We would like to have this approved by the board, so that we can include the Smyrna Ready Mix Logo on the new synthetic turf field upon installation. Please email me and Dr. Southerland to let us know if this request can be granted.

Sincerely,

Matt Williams



SPECIAL COURSE REQUEST APPLICATION

Use this document to compile all information required for online 2022-2023 special course application form.

Special Course Application Worksheets will not be accepted as complete submissions and will not reviewed.

Do not complete and send in this form. Only use this document to inform your district of the application questions.

DISTRICT AND SCHOOL INFORMATION

Special Course Name: Life Skills and Management

School District Name: Rutherford County Schools

School District Number: 750

District Contact Name: Dr. Kay Martin

Email: martink@rcschools.net

Contact Title: Secondary Coordinator for Rutherford County Schools

Phone: 615-893-5812

List the school(s) and state school number(s) where this course will be offered for the **2022-23** school year: Blackman High School (004), Central Magnet School (015), Daniel McKee Alternative School (027), Eagleville School (035), Holloway High School (037), Laverne High School (063), Oakland High School (072), Riverdale High School (074), Siegel High School (104), Smyrna High School (098), Smyrna West Alternative School (092), Stewarts Creek High School (225), Rockvale High School (0085)

COURSE INFORMATION

When will this special course be offered? ☒ Fall Semester ☒ Spring Semester ☐ Year-long

Course Delivery Model:
Will any portion of this course be delivered online?

- ☒ No
☐ Yes
☐ Blended

If Online Delivery:
☐ Asynchronous
☐ Synchronous

Proposed Level of Special Course:

- ☒ Introduction (Level 1)
☐ Intermediate (Level 2)
☐ Advanced (Level 3)
☐ Capstone (Level 4)

Note: The final determination of the level of the special course will be included in the letter of approval.

Credit must be awarded in a specific area and cannot be requested simply as "elective credit." Select the content area for which credit would be awarded upon completion of this special course.

- ☐ English
☐ Math
☐ Science
☐ Social Studies

- ☐ Fine Arts
☐ World Language
☒ Wellness & PE
☐ Special Population

- ☐ Career and Technical Education
Specify Career Cluster: _____

- ☐ Other: specify subject(s) included: _____

Special course standards are attached and include all appropriate references to Tennessee Academic Standards ☐ No ☒ Yes

SPECIAL COURSE APPLICATION WORKSHEET

Use this document to compile all information required for online submission of the online 2021-2022 special course application form.

Special Course Application Worksheets will not be accepted as complete submissions and will not be reviewed.

SPECIAL COURSE DESCRIPTION	
1. District: Rutherford County Schools	
2. Course name: Life Skills and Management	
3. Course description: The focus of this course is the socio-physiological and emotional growth of the student for self-awareness and improvement from adolescence to young adulthood	
4. Course standards including alignment to Tennessee Academic Standards: This course is aligned with the following Tennessee Academic Standards: HS.MESH.1, HS.MESH.2, HS.MESH.6, HS.MESH.7, HS.HGD.1, HS.HGD.2, and TN Writing Standards	
The Tennessee Health Education and Lifetime Wellness Standards	LIFE SKILLS AND MANAGEMENT STANDARDS
HS.MESH.1 Identify emotions and their effects on the mind and body.	Developing Positive Self Image There's a link between emotional regulation and self-esteem. Developing a positive self-image is an important aspect of identification of one's mind and body. A positive self-image begins with confidence. Confidence Building is designed to facilitate the development of confidence in young people. Giving and earning respect, identifying strengths, making decisions that are consistent with growth and personal values of the individual. LESSONS <ul style="list-style-type: none"> GIVING AND EARNING RESPECT IDENTIFYING STRENGTHS ESTABLISHING WHAT'S IMPORTANT IMPROVING WELL-BEING DEVELOPING PERSONAL POWER
HS.MESH.2 Recognize stressors and formulate personal stress management techniques.	Time Management Implementing time management skills and prioritizing strategies will help students recognize stressors, control their workload and have time for personal activities. LESSONS <ul style="list-style-type: none"> GOAL SETTING

	<ul style="list-style-type: none"> • PRIORITIZING YOUR TIME • PLANNING WISELY • TACKLING PROCRASTINATION • CRISIS MANAGEMENT • MANAGING STRESS • CREATING POSITIVE TIME MANAGEMENT HABITATS
HS.MESH.6 Identify positive ways of resolving interpersonal conflict.	<p>To effectively resolve conflicts students must understand the importance of conflict resolution. Students must understand how to manage their anger in conflict situations. Resolving Conflicts provides an overview of effective conflict resolution strategies, including identifying conflict triggers, the role of emotions in conflicts, and ways to reduce conflicts.</p> <p>LESSONS</p> <ul style="list-style-type: none"> • INTRODUCING CONFLICT RESOLUTION • RECOGNIZING MISLEADING PRECONCEPTIONS • MANAGING ANGER IN CONFLICT • CREATING A WIN-WIN SITUATION • RESOLVING CONFLICT
HS.MESH.7 Demonstrate appropriate refusal skills. (e.g., drugs, relationships, sexual activity).	<p>Appropriate refusal skills will require students to learn non-abusive behaviors. Students must learn the “why” and “when” of saying no. Students who are taught appropriate refusal skills are more likely to make positive choices and refrain from high-risk behaviors. When students understand the personal link between behavior and consequences, they demonstrate assertion and make better choices.</p> <p>LESSONS</p> <ul style="list-style-type: none"> • SELF AWARENESS AND SELF RESPECT • SELF CONTROL • RESPECT FOR INDIVIDUAL DIFFERENCES • MAKING HEALTHY CHOICES
HS.HGD.1 Examine the aspects of positive relationships (e.g., family, dating, friendship, professional, community)	<p>Positive relationships require healthy communication skills for proper collaboration or consideration. Communication skills are essential for lifelong success. Learning proper communication skills including how to understand nonverbal communication, listen effectively and critically, speak responsibly, and communicate constructively. What's more, they learn good listening skills</p>

	<p>and appropriate responses, including tolerance and open-mindedness. These skills will teach students how to listen and respond clearly and assertively while respecting other people's opinions. Moreover, it will help them avoid miscommunication, overreacting, and misinterpretation. This will help them build healthy relationships with family and friends. Not only that, but these skills will also help students to form healthy connections in the workplace and society.</p> <p>LESSONS</p> <ul style="list-style-type: none"> • UNDERSTANDING NONVERBAL COMMUNICATION • LISTENING • LISTENING CRITICALLY • SPEAKING RESPONSIBLY • COMMUNICATING CONSTRUCTIVELY
<p>HS.HGD.2 Determine the influence of families, media, cultural traditions, and economic factors on human development</p>	<p>DECISION MAKING AND SETTING GOALS</p> <p>PART 1 DECISION MAKING</p> <p>People make many decisions every day, some more difficult than others. Decisions are influenced by many factors, including beliefs, traditions, culture media and values Exploring personal strengths and abilities requires decisions making and understanding the opportunities afforded to them are contingent upon those decisions. Students must develop strong decision-making skills not only for success in high school, but also for success in life. Students will learn how to start the decision-making process, gather important information, explore alternative decisions, consider consequences, and make and evaluate decisions.</p> <p>LESSONS</p> <ul style="list-style-type: none"> • STARTING THE DECISION MAKING PROCESS • GATHERING INFORMATION • EXPLORING ALTERNATIVES • CONSIDERING CONSEQUENCES • MAKING AND EVALUATING DECISIONS <p>PART 2 SETTING GOALS</p> <p>Effective goal setting strategies leads to success. Self-assessment is linked to goal setting. Self-assessment helps students identify who they are to promote self-awareness, knowledge and deeper learning. When students examine their own learning, it helps them identify areas that may need improvement for them to obtain personal goals. In this section students learn how to identify goals by self-awareness, setting priorities, develop a positive attitude, access resources, and be assertive.</p> <p>LESSONS</p>

	<ul style="list-style-type: none"> • IDENTIFYING GOALS • SETTING PRIORITIES • DEVELOPING A POSITIVE ATTITUDE • ACCESSING RESOURCES • LEARNING TO BE ASSERTIVE
	<p>Skills for School and Beyond</p> <p>To be successful in school—and even in life after school—having a skillset that includes understanding your learning style; time management; reading, listening, and note taking strategies; writing reports and conducting presentations; test preparation strategies; and managing stress is essential.</p> <p>LESSONS</p> <ul style="list-style-type: none"> • IDENTIFYING YOUR LEARNING STYLE • READING, LISTENING AND NOTE TAKING • WRITING REPORTS AND PRESENTING • PREPARING FOR TESTS AND EXAMS • MANAGING STRESS
	<p>Standards Alignment Notes</p> <p>**References to other standards include:</p> <p>9-10.W.TTP.1 Write arguments to support claims in an analysis of substantive topics or texts, using valid reasoning supported by relevant and sufficient evidence. a. Introduce precise claim(s). b. Develop claim(s) and counterclaim(s) fairly, supplying evidence for each claim and counterclaim while pointing out the strengths and limitations of both in a manner that anticipates the audience's knowledge level and concerns. c. Create an organization that establishes cohesion and clear relationships among claim(s), counterclaim(s), reasons, and evidence. d. Provide a concluding statement or section that follows from and supports the argument presented. e. Use precise language and domain-specific vocabulary to manage the complexity of the topic. f. Establish and maintain a formal style and objective tone.</p> <p>9-10.W.TTP.2 Write informative/explanatory texts to analyze and convey complex ideas, concepts, and information clearly and accurately through the effective selection and organization of content. a. Provide an introduction that is relevant to the rest of the text and effectively engages the audience. b. Organize ideas to create cohesion and clarify relationships among ideas and concepts, including but not limited to use of appropriate and varied transitions. c. Develop the topic with well-chosen, relevant, and sufficient facts, extended definitions, concrete details, quotations, or other information and examples appropriate to the audience's knowledge of the topic. d. Provide a concluding statement or section that follows from and supports the information or</p>

	<p>explanation presented. e. Use appropriate formatting, graphics, and multimedia to aid comprehension. f. Use precise language and domain-specific vocabulary to manage the complexity of the topic. g. Establish and maintain a formal style and objective tone.</p>
5. Number of credit(s): .5	
6. Pre-requisite course(s): Wellness or the course can be taken concurrently	
7. Early postsecondary opportunities and/or industry certifications: N/A	
8. Teacher requirements: Endorsement 419, 420, 407, 126, or 133	
<p>9. Provide justification for offering this special course (reason for including this course in the school program:</p> <p>We teach students about physical health and development as they enter young adulthood from adolescence, but there is also the socio-psychological, emotional development component that needs to be addressed and nurtured. Socio-psychological and emotional learning are crucial life skills students must learn in order to develop a positive self-image, to learn how to communicate effectively, to effectively resolve conflict and to develop strong decision-making skills. These life skills and management techniques aid in student success not only in high school but also for in life.</p>	
<p>10. Describe how this course was developed:</p> <p>My years as an educator and advocate for the youth has brought to my attention a deficiency in the social/psychological, emotional and development of our children. The socio- psychological and emotional development of students has a major impact on student academic achievement. This course will be beneficial to the social and emotional skill of students, especially their beliefs and attitudes about self, school, and civic engagements. When students have the opportunities to learn and develop socio-psychological and emotional skills, their social behaviors improve, their conduct problems decline, and their academic performance improves.</p>	
11. List the names/titles of individuals who developed the course: Sonji L. Newman M.Ed.	
<p>12. Provide any other pertinent information about this course:</p> <p>The socio-physiological and emotional growth of the youth is imperative in relation to the development of interpersonal skills, problem solving skills, making decisions and effective communication. Students must learn how to think responsively in reference to building healthy relationships and lifestyles to be productive citizens.</p>	

2021-22 SPECIAL COURSE LOCAL APPROVAL AND ASSURANCES

Required for all special course applications

Special Course Name: Life Skills and Management

School District: Rutherford County Schools

We verify that the information on this application is complete and accurate. Assigning the proposed instructor to this special course will not preclude having all State Board of Education approved courses taught by appropriately endorsed teachers.

Date of Approval by Local Board of Education:

Chairperson's Signature

Date

Director of Schools' Signature

Date

Stewarts Creek High School Touchdown Club



Term Sheet Proposal

February 25, 2022

Strictly Private and Confidential

Summary of Potential Terms and Conditions

For Discussion Purposes Only

Borrower:	Stewarts Creek High School Touchdown Club (The "Borrower").
Facility:	\$608,026.30 Commercial Term Loan with funding to match contract of Warner's Athletic Construction (WAC) – Total cost of project \$832,922.
Purpose:	Installation of artificial turf on football field at Stewarts Creek High School
Collateral/Security:	Bank will take SCHS Touchdown Club's deposit account to be maintained with FirstBank as collateral along with an assignment of pledges.
Maturity:	Five (5) years from date of closing
Repayment:	Interest payable monthly with one fourth (1/4) of original principal amount payable annually, on or before December 31 beginning calendar year 2023, followed by one payment of all unpaid interest and principal due at maturity.
Guarantors:	None

Summary of Potential Terms and Conditions

For Discussion Purposes Only

Interest Rate:	5.0% Fixed
Origination Fee:	None
Prepayment:	The loan may be prepaid at any time without penalty.
Funding:	Funds in the amount of the loan will be disbursed at time of closing.
Reporting Requirements:	<ul style="list-style-type: none"> ▪ Annual Financial Statements (unaudited) within thirty days of fiscal year end ▪ Form 990 (or related form) filed with the Internal Revenue Service within thirty days of filing ▪ Complete list of pledges obtained from community donors.
Term Sheet Expiration:	March 31, 2022 (5:00 P.M. CDT)
Other:	<ul style="list-style-type: none"> ▪ FirstBank will require a cost breakdown for the proposed project prior to closing for review and understanding. ▪ The Term Loan is subject to approval by Rutherford County Board of Education for installation of the artificial turf. ▪ SCHS football coach(es) and certain officers of the SCHS Touchdown Club, will meet with a representative of FirstBank to discuss updates of the fund-raising efforts of the football program and specific plans for the annual principal payment. ▪ Governing Law and Jurisdiction: State of Tennessee

Summary of Potential Terms and Conditions

For Discussion Purposes Only

This Proposed Summary of Terms and Conditions is intended as an outline of certain proposed material terms of the Facilities and does not purport to describe all of the terms and conditions, representations and warranties, covenants and other provisions that could be contained in the definitive loan documentation relating to the Facilities. This is for discussion purposes only and does not constitute a commitment by FirstBank.

Very truly yours,

First Bank

By:

Judy King
VP, Relationship Manager

AGREED TO AND ACCEPTED:

By:

Name

Title

Date



Stewarts Creek High School Touchdown Club Turf Project

Down Payment

Collected Now	
SRM	\$37,500.00
SCHS Touchdown Club	\$15,000.00
TOA	\$4,000.00
Fairlife/Coca-Cola	\$5,000.00
Jostens	\$10,000.00
EB (Anonymous)	\$10,000.00
JL (Anonymous)	\$5,000.00
JG (Anonymous)	\$1,000.00
General Athletics	\$7,000.00
SCHS Band Boosters	\$12,000.00
SCHS Womens Soccer	\$2,000.00

One Time	
Silent Donor	\$75,000.00
Yearbook	\$12,500.00
SCHS Broadcasting	\$8,000.00
Student Council	\$7,500.00
Coca-Cola	\$5,000.00
Parks Realty Smyrna	\$1,000.00
Parks Development	\$1,000.00
Team Electric	\$1,000.00

TOTAL \$219,500.00 28.03%

BUDGET \$783,000.00
INTEREST \$80,000.00
TOTAL \$863,000.00

FINANCED \$563,500.00

Payment 1 Cycle

Due 12-31-2023

Revenue Collected	
SRM	\$37,500.00
SCHS Touchdown Club	\$15,000.00
TOA	\$4,000.00
Fairlife/Coca-Cola	\$5,000.00
Jostens	—
EB (Anonymous)	\$10,000.00
JL (Anonymous)	\$5,000.00
JG (Anonymous)	\$1,000.00
General Athletics	\$18,000.00
SCHS Band Boosters	\$13,000.00
SCHS Womens Soccer	\$2,000.00

Wilcox Co.	\$12,000.00
Football Account	\$7,500.00
MTSU	\$10,000.00
SCHS Mens Soccer	\$4,000.00
SC Youth League	\$3,500.00
SCMS Football	\$2,500.00
Kona Ice	\$2,500.00
SCHS Ultimate Frisbee	\$1,000.00
Turf Revenue	\$15,000.00

TOTAL \$168,500.00

Principle Payment Due \$140,875.00
Interest Payment Due \$28,000.00
TOTAL DUE 1 OF 4 \$168,875.00

Payment 2 Cycle

Due 12-31-2024

Revenue Collected	
SCHS Touchdown Club	\$15,000.00
TOA	\$4,000.00
Fairlife/Coca-Cola	\$5,000.00
Jostens	\$5,000.00
EB (Anonymous)	\$10,000.00
JG (Anonymous)	\$1,000.00
General Athletics	\$30,000.00
SCHS Band Boosters	\$20,000.00
SCHS Womens Soccer	\$6,000.00

Wilcox Co.	\$24,000.00
Football Account	\$15,000.00
MTSU	\$5,000.00
SCHS Mens Soccer	\$6,000.00
SC Youth League	\$3,500.00
SCMS Football	\$2,500.00
Kona Ice	\$2,500.00
SCHS Ultimate Frisbee	\$1,000.00
Turf Revenue	\$20,000.00

TOTAL \$175,500.00

Principle Payment Due \$140,875.00
Interest Payment Due \$22,000.00
TOTAL DUE 2 OF 4 \$162,875.00

Payment 3 Cycle

Due 12-31-2025

Revenue Collected	
SCHS Touchdown Club	\$15,000.00
TOA	\$4,000.00
Fairlife/Coca-Cola	\$5,000.00
Jostens	\$5,000.00
EB (Anonymous)	\$10,000.00
JG (Anonymous)	\$1,000.00
General Athletics	\$30,000.00
SCHS Band Boosters	\$20,000.00
SCHS Womens Soccer	\$6,000.00

Wilcox Co.	\$12,000.00
Football Account	\$7,500.00
MTSU	\$5,000.00
SCHS Mens Soccer	\$6,000.00
SC Youth League	\$3,500.00
SCMS Football	\$5,000.00
Kona Ice	\$2,500.00
SCHS Ultimate Frisbee	\$1,000.00
Turf Revenue	\$20,000.00

TOTAL \$158,500.00

Principle Payment Due \$140,875.00
Interest Payment Due \$16,000.00
TOTAL DUE 3 OF 4 \$156,875.00

Payment 4 Cycle

Due 12-31-2026

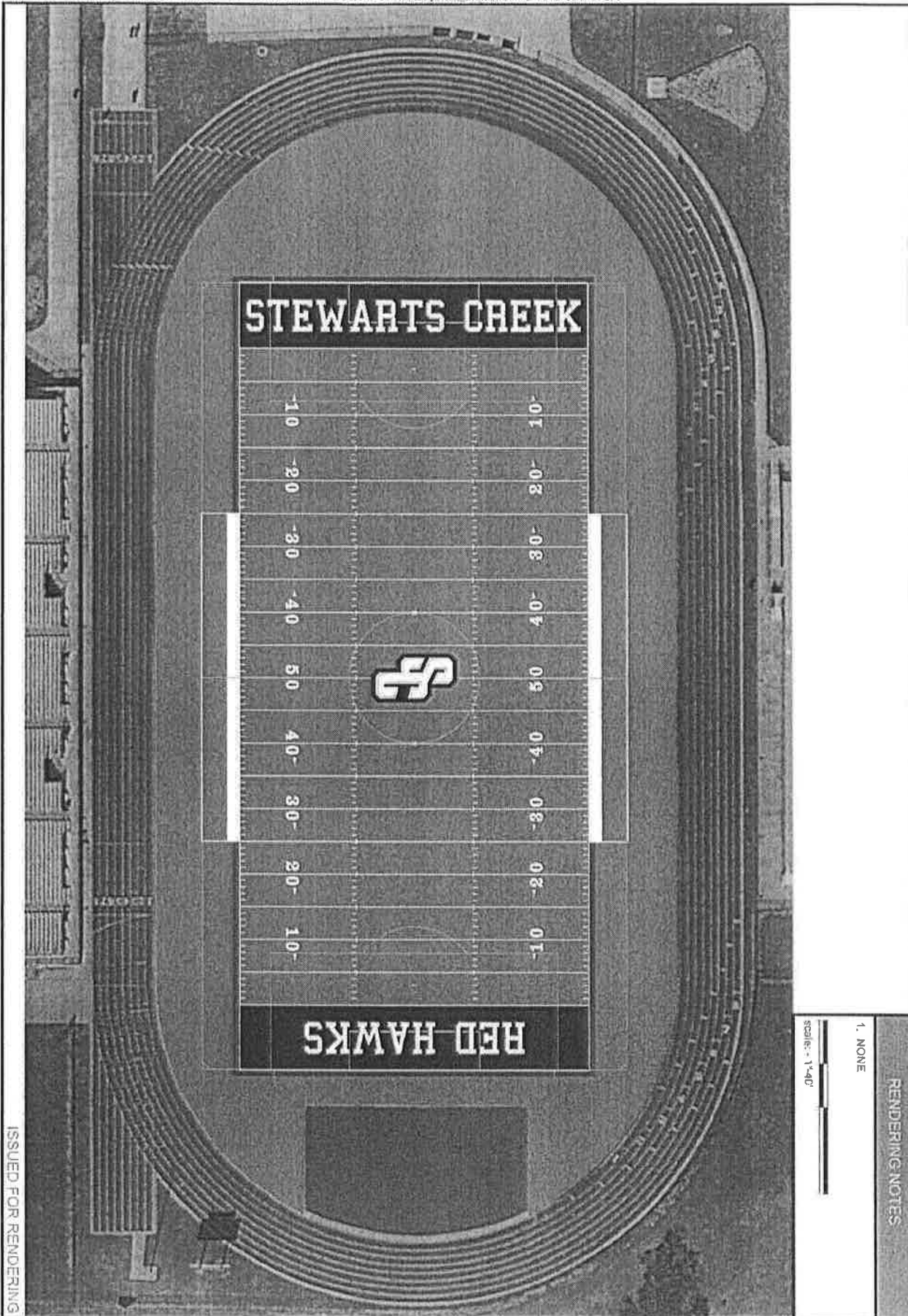
Revenue Collected	
SCHS Touchdown Club	\$15,000.00
TOA	\$4,000.00
Fairlife/Coca-Cola	\$5,000.00
Jostens	\$5,000.00
EB (Anonymous)	\$10,000.00
JG (Anonymous)	\$1,000.00
General Athletics	\$30,000.00
SCHS Band Boosters	\$20,000.00
SCHS Womens Soccer	\$4,000.00

Wilcox Co.	\$12,000.00
Football Account	\$7,500.00
MTSU	\$5,000.00
SCHS Mens Soccer	\$4,000.00
SC Youth League	\$7,000.00
SCMS Football	\$2,500.00
Kona Ice	\$5,000.00
SCHS Ultimate Frisbee	\$2,000.00
Turf Revenue	\$20,000.00

TOTAL \$159,000.00

Principle Remaining \$127,000.00
Interest Payment Due \$14,000.00
TOTAL DUE 4 OF 4 \$141,000.00

SURPLUS \$18,000.00



RENDERING NOTES

1. NONE

Scale: 1"=40'

ISSUED FOR RENDERING

COPYRIGHT © 2017 - SHAW SPORTS TURF (ALL RIGHTS RESERVED)

T
R
SHEET
OF 2

JOB # 1000000
DATE 5/20/21
DRAWN BY:
Brandon Enley

STEWARTS CREEK
MULTI-SPORT
SMYRNA, TN
RENDERING

PRODUCT: TBD
AREA: 104,683 SF
INFILL TYPE: RUBB/SAND
INFILL RATIO: TBD
INSTALLER: TBD

shawTM
SPORTS TURF
www.shawsportsturf.com



Stewart Creek High School

Synthetic Football Field

BUDGETARY

DESCRIPTION OF PROPOSED CONSTRUCTION PROJECT

Warner's Athletic Construction ("WAC") proposes, based on our discussions to provide and install approximately 105,000 sq. ft. of Shaw Legion 2.0 Synthetic Turf. The infill system will consist of sand and SBR crumb rubber. All logos and field markings to be approved on shop drawings prior to being ordered. Turf will be delivered in 15' wide rolls. The scope for all work and materials for the turf installation is as follows:

WAC SCOPE OF WORK FOR INSTALLING SYNTHETIC TURF:

WAC will:

- Lay out.
- Remove existing turf and haul off site.
- Excavate the existing soils to a depth to achieve .5% slope.
- Laser-grade the sub-grade and roll to compact.
- Install a header ditch/ drainage system using 10" corrugated pipe on the subgrade.
- Install geo-textile liner on the sub-grade as a barrier between the soil and the stone.
- Install, laser grade and compact 4" of a washed #57 limestone base material.
- Install, laser grade and compact 2" of a washed #89 limestone base material.
- Install approved Shaw synthetic turf system.
- One color EZ Letters in each end zone.
- 1 two color mid-field logo.
- 8 Year Manufacturer Warranty
- WAC will provide a 12 month workmanship warranty on the base work on all field.

MATERIALS PROVIDED BY WAC:

- All sub and base materials.
- All turf and infill materials.
- All materials/ equipment necessary for installation.
- WAC will provide all Shaw sports turf synthetic turf system.

CLIENT RESPONSIBILITIES:

- Provide adequate drainage structures to tie in trunk lines.
- Contract should be provided and mutually agreeable to both parties.
- Provide reasonable and clear access to the job site during the hours from 7am to 7pm.
- Provide parking on location.
- Allow for work on the site on all days (including Saturday and Sunday) permitted by local ordinance.
- Obtain any required permits when applicable for the construction project as defined herein and provide copies to WAC prior to construction.
- Provide adequate staging area and access to the job site.

ASSUMPTIONS:

- Existing inner curb of track is adequate for nailer board.
- Location to dump/ store all spoils to extend the existing practice field.
- All asphalt entrances, parking lots and roads are installed at thickness to handle the pressure of several dump trucks loaded with approximately 70,000#'s. WAC is not responsible for repairing damaged asphalt from the construction process.
- Existing drain structures are adequate.

EXCLUSIONS

- ***Bond, Permits and Taxes*** not included.
- Assumes all access roads can with stand the stress of construction traffic. WAC is not responsible for the repairs of any campus acces roads or streets.
- Off field Drainage costs. Any additional pipe or structures beyond the perimeter of each field.
- Off field Irrigation repairs and re-routing the main water lines from under the perimeter of each field and to irrigate the common areas between the fields.
- Any surface drain culverts.
- Proposal assumes appropriate digging conditions. Unsuitable soils or excessive rock stuctures will be removed and replaced at an additional cost.
- Repair of any work completed by WAC, but damaged by another contractor will be repaired at an additional cost.

WORK COMPLETED BY WAC BEYOND DESCRIBED SCOPE

The Client may, from time to time, request changes in the scope of the services of WAC to be performed under this Agreement. Such changes, including any increase or decrease in the amount of WAC compensation, will be mutually agreed upon by and between the Client and WAC prior to the work commencing. Such changes shall be incorporated into a Change Order that will be signed by the Client and WAC and will become a part of this Agreement.

PROPOSED COSTS FOR PROJECT

LegionHP 2.0 Turf System

\$779,922.00

OPTIONS:

* BrockFill Organic Infill System:	+ \$19,000.00
* Brock SP 17 Concussion Pad:	+ \$109,977.00
* Deduct if stone is donated:	- \$50,000.00

UNSUITABLE SOILS Cost:

Cut- \$38.00 per cu. yd.

Fill- \$58.00 per cu. yd.

***** *"AS A RESULT OF THE CURRENT VOLATILE
MARKET, PRICES ARE GOOD FOR 15 DAYS"***

PAYMENT SCHEDULES:

- 5% initial billing upon commencement of project for mobilization and materials to site.
- 20% upon completion of base excavation.
- 50% upon completion of drains, aggregate installation.
- 25% upon completion of turf install.

Payments made to: Warner's Athletic Construction
570 Huntly Industrial Drive

Smyrna, Tennessee 37167

PRICING AND INFORMATION DISCLAIMER

This proposal and all pricing herein are intended only for the Client identified in this document, and any and all pricing information shall remain confidential between Warner's Athletic Construction and the Client aforementioned. Pricing is valid for thirty (30) days from the issuance of the proposal to Client.

ACCEPTANCE

By signing below, I agree to all the terms listed herein. Upon completion of project any unpaid balance due on account is subject to an 18% annual late charge or service charge.

Stewart Creek High School:

By:

Date:

Its:

Warner's Athletic Construction

By: Lou Warner/ Russ Russell

Date:

Its: Partners

STEWARTS CREEK TOUCHDOWN CLUB
EXECUTIVE BOARD SPECIAL MEETING MINUTES
Thursday, February 24, 2022

Officers in Attendance:

TD Club President, Angela Hoover
TD Club VP, Shauna Otis
TD Club Treasurer, LaShunda Shaw
TD Club Secretary, Jennifer Hadley

SCHS Football Head Coach, Ben Caudill

Meeting called to order at 7:03 p.m.

Subject of Meeting: With the addition of different entities using our football field for various sports and events (SC Youth Football League, band competitions, boys/girls soccer, ultimate frisbee, etc.), the quality of the field has declined steadily. Additionally, the cost to maintain the field has grown due to the increased need for field paint, gas/maintenance of lawn mowers, top sod, etc. Therefore, the need to upgrade to turf is now a high priority. A turf field will help to prevent game forfeits, rescheduling, and/or loss of scheduled home games due to field conditions. A turf field will allow us to rent the facility to more outside programs. These events will all help to fund the loan for the project and bring extra funds to the program for many years.

Plan:

- In order to gain approval of the plan to upgrade to turf from the school board, a proposal must be presented no later than 8:00am Monday, February 28, 2022. This will place the proposal on the agenda for the next school board meeting on Thursday, March 10, 2022. If approved, financing can be applied for on Friday, March 12, 2022.
- Financing for the loan for the project will be through First Bank
 - President, Fred Howell ◦ Broker/point of contact, Judy King
- Terms
 - \$840,000 principle (without interest) ◦ \$912,000 total (with interest)
 - 5-year loan ◦ Approximately 30% down payment
- Financing will be via various donations and fundraising; interest to be paid via football account and SCHS Touchdown club
 - Football to pay \$7,500/year ◦ TD Club to pay \$15,000/year
 - First check from TD Club would be needed by March 12, 2022, if approved
- Will not be deducted from the Field House account
- For any donations funds received for the project but not needed after it is paid in full, full transparency will be given to the donor and the option to fund other accounts (field house, football program, etc.)

Approval: Motion made and seconded to approve the turf proposal as presented.

- All in attendance agreed with the motion to proceed.

Meeting adjourned at 7:51 p.m.

PURCHASE REQUISITION/AUTHORIZATION

P.O. No. S 425994

Bill To/Ship To: School

Address

BLACKMAN MIDDLE SCHOOL

City/State/Zip

3945 BLAZE DRIVE

ATTN:

MURFREESBORO, TN 37128

Phone ()

VENDOR

Concert Productions

Requested By

David England

Address

Charge To

4003.0000

City/State/Zip

ATTN:

Date

2/22/22

Item No.	Quantity	Item/Service/Description	Unit Price	Amount
1		BMS auditorium		
2		lighting upgrade.		
3				
4				
5		Not to exceed \$16897.00		
6				
7				
8				
9				
10				
11				
12				
13				
14				
15				
Total				\$

This account has a sufficient balance to make this purchase.

Account No.

4003.0600

Bookkeeper

Tracy Murphy
(Verify Funds Available)

Date

2/22/22

Approved By

Amy Connerly - Mare
(Principal)

Date

2.22.22

White Copy for Vendor

Yellow Copy for Office

Pink Copy for Originator

RUTHERFORD COUNTY SCHOOL SYSTEM
Negotiated Bid Form

- * Required if between \$1000-10,000
- * Contact at least 3 vendors
- * Attach form to requisition
- * Advertise if > \$10,000

Dept./School: Blackman Middle
Date: 2/22/22

Description: Lighting upgrade to auditorium

	Vendor #1	Vendor #2	Vendor #3
Vendor Name	Concert Productions	4 wall Entertainment	Myers Concert Production
Contact Person			
Phone Number			

Qty.	Item Description	Price	Price	Price
	Lighting for Rms auditorium	\$6,897.00	\$18,594.45	\$14,329.51

Person Negotiating: David England
Reasons For Selection of Vendor: _____
price

Approved By: Amy Campy - Mde
Accounts to be charged: 4003.0600
(Bookkeeper to Verify)

Concert Production

217 West Main Street
Murfreesboro Tennessee 37130

(615) 896-6518

PROPOSAL

PROPOSAL	DATE
17132	10/25/2021 10:01a
ACCT	EMPL ID
1576	RXROYSDE
PO	EXPIRES
	11/24/2021

Bill To: Attn: Amy Zerner
Blackman Middle School
3945 Blaze Drive
Murfreesboro TN 37128

H(615)904-3860
zernera@rcschools.net

QTY	SKU#	DESCRIPTION	PRICE EA	DISC	TOTAL
1		Installation	2000.00		2000.00
Labor will not exceed this amount.					
1		Installation Parts	500.00		500.00
Rigging Hardware, electrical extentions, and connectors.					
500		DMX Cable	1.25		625.00
9		Saftey Chains	5.00		45.00
9	CTC50HC	Trusst Half Coupler Lighting Clamp	26.00		234.00
1	QUICKQ10	Chamsys Quick Q 10 1 Universe Lighting Console	2125.00	125.00	2000.00
This is the lighting controller. We can discuss other options, however we recommend this one because of its ease of use copared to lower priced options.					
9	HEXV12	Rasha Professional Hex V12 Wireless LED Light	209.00	531.00	1350.00
5 of these fixtures are for the mid stage wash					
4 of these fixtures are for the upstage line (back light)					
1		21' Black Pipe	143.00		143.00

	SUBTOTAL	6897.00
	TOTAL	6897.00



QUOTE

T169152

Version 1

Print Date: 01/27/2022

4WALL ENTERTAINMENT, INC
820 COWAN ST
NASHVILLE, TN 37207
USA
Phone: (615) 453-2332

Description: OL NEW QUOTE #363762 - DAVID ENGLAND
Deal: CASH - TN
PO No: PENDING
Terms: COD
Billing Cycle: SINGLE PER.

Agent: DAMON HERBERT
Email: dherbert@4wall.com
Project Manager: DAMON HERBERT
Email: dherbert@4wall.com

Issued To

CASH - TN
820 COWAN STREET
NASHVILLE, TN 37207
USA

Outgoing (PICK UP)

Location: NASHVILLE
Attention: RECEIVING
820 COWAN ST.
NASHVILLE, TN 37207
USA

SALES

I-Code	Description	Qty.
MISC-N	CHANSYS QUICKX 20	1
	SUB-TOTAL	1,080.00
MISC-N	CHAUVET COLORADO 2 QUAD ZOOM	9
	SUB-TOTAL	10,831.25
MISC-N	ELATION GDCPAR 300	9
	SUB-TOTAL	5,872.50
432800	MEGA-CLAMP, BLACK	9
254960	SAFETY CABLE 30' BLACK	9
	SUB-TOTAL	110.70
482450	SHIPPING CHARGES ADDITIONAL	1-
Note: - Shipping and handling are additional and have not been included in the quoted prices.		
453281	LEAD TIMES	1-
Note: Lead times will be advised at time of order. Rush charges and expedited shipping charges may apply.		

SALES Sub-Total	\$ 18,884.45
TAX (9.250%)	\$ 1,719.99
SALES Total	\$ 20,604.44

SUB TOTAL	\$ 18,884.45
TAX	\$ 1,719.99
GRAND TOTAL	\$ 20,604.44

Terms and Conditions:**Terms and Conditions**

Please note the following regarding this sales quote.

- Items are offered per manufacturer's specification regardless of any other specifications. Any requirements for customization or third party certification will be billed additional.
- Permitting, engineering, and installation are not included.
- All other accessories are an additional cost and are not included in this quote.
- Standard Equipment (not custom or made to order) may be returned up to 48 hours after delivery. Refunds to be provided as store credit. Re-stocking fees may apply.
- Prices are itemized for convenience only. This does not constitute an offer to sell less than lot.
- Prices are predicated on quantities listed only.
- This is a quote for the purchase of new equipment. Price does not reflect applicable sales tax unless otherwise noted. All new equipment is subject to availability and lead times. Pre-payment is required unless terms are established with our credit department.
- Pricing is valid for 30 days.
- Shipping charges are additional and have not been included in the purchase price, unless otherwise noted.
- Sales tax is additional and has not been included in the purchase price, unless otherwise noted.
- Items may ship from multiple locations.
- This proposal, its contents, and all related documentation generated by 4Wall Entertainment are confidential and shall not be disclosed to third parties.



Myers Concert
Productions
1248 Madison Street
Shelbyville, Tennessee
37160
United States

(615) 956-2860
admin@myerscp.com
myerscp.com

Lighting Upgrade

Blackman Middle School

3945 Blaze Drive
Murfreesboro, Tennessee 37128
United States

englandda@rcschools.net

615-893-5815 EXT:29155

Presented By
Myers Concert Productions



Quote Number
Q-1132

Presented On
Feb 18 2022

Version
1

Systems

Lighting

ITEM		QTY	UNIT PRICE
	Chamsys QuickQ 10 Console	1	\$2,123.48
	1-Universe Compact Lighting Console		
	Chauvet Professional ColorDash Par H12IP	9	\$645.67
	A compact, yet powerful IP-rated RGBWAUV LED wash delivering a beautifully mixed, soft field of richly saturated colors		
LH	Lighting Hardware/Accessories	1	\$1,400.00
	Clamps, power cables, safety cables, DMX, DMX split, mounting/rigging hardware		
3T	3 Technicians - 3 Days	1	\$4,995.00

Scope of Work

- Hang and install COLORdash H12IP fixtures
- Install Chamsys Quick-Q console and create basic scene with color washes

Summary

Subtotal	\$14,329.51
Tax	\$1,397.12
Total Price	\$15,726.63

Client Must Provide

- Uninterrupted access to room during hours of installation (will work around school's schedule)
- Access to a motorized lift capable of reaching rigging points
- Rigging points capable of holding 200lbs to mount COLORDash H12IP fixtures
- Access to a 20A circuit that is non-dimmable

Signature

Signature

Date



PRINCIPAL

DR. AMY CONNIFEY-MARLIN

3945 BLAZE DRIVE

MURFREESBORO, TN 37128

PHONE (615) 904-3860

FAX (615) 904-3861

WWW.BLM@RCSCHOOLS.NET

ASSISTANT PRINCIPALS

SETH BURT

JESSICA JACKSON

STEPHANIE PHILLIPS

February 22, 2022

To Whom It May Concern:

Blackman Middle School would like to request approval to upgrade the auditorium stage lighting. The materials and labor will be paid for by the school's General Fund-Campus Improvement. The project would be at no cost to the School Board.

Thank you,

Dr. Amy Connifey-Marlin
Principal

Rutherford County Schools

Application for Campus Construction Project

Before any request for construction of proposed buildings will be forwarded to the Rutherford County School Board, the following form must be filled out in full and submitted to the Rutherford County Schools Engineering and Construction Department with a letter from the School Principal, a site plan, floor plan and elevations (if applicable), a full estimate, and schedule.

1. School Name *Blackman MS*
2. Principal *Dr. Amy Connifoy-Martin*
3. Project Name *Auditorium stage lighting*
4. Assistant Principal who is overseeing the project
5. Does project support recreational sports, athletics or education? *Education*
6. Does this project meet all gender equity criteria? *Yes*
7. What department is this project being constructed for? (I.E. Baseball, softball, band, FFA, etc.) *Band, Choir, Dance*
8. What is the anticipated cost for this project (this should include all utility connection fees, building permits, inspection, and construction). Attach and submit a detailed estimate. *(attached)*
9. What is the funding source and are funds currently available: (Grant, Booster Club, etc.) List all sources. *School General Fund - campus improvement*
10. If a grant or funded by a foundation/donor/ charitable organization, what is the foundations name? *NA*
Do construction plans meet criteria for funding? *NA*
11. If funded by a local financial institution, has the loan been approved and who is the guarantor for loan *NA*
12. Do you have a site layout showing where this project will be constructed on campus? *Auditorium*
13. Has RCS Engineering & Construction reviewed project location? Are there any conflicts in utilities or easements? *NA*
14. Has MTEMC, CUD, MWSD or other local utilities been contacted for service connection if required? *NA*
15. Are plans drawn and stamped by Architect/ Engineer? *NA*

16. Have plans been submitted to Rutherford County Codes or Murfreesboro City Building Codes Offices for review and/or approval. (LaVergne City Codes, Smyrna City Codes, Murfreesboro City Codes) **NA**
17. What is your time line for completion of project? When will it start and when will it be completed? **April-May 27**
18. If stated that construction project is at no cost to school Board all cost should be included in project. This includes electrical, plumbing, and mechanical services. ✓
19. Do you have a contractor for constructing/completing the project? What is the name of Contractor? If no, who will be overseeing the project from the community and who will be doing the work? **Concert Production + Music Supply, Murfreesboro**

Concert Production

217 West Main Street
Murfreesboro Tennessee 37130

(615) 896-6518

PROPOSAL

PROPOSAL	DATE
17716	02/22/2022 2:25p
ACCT	EMPL ID
1576	RXROYSDE
PO	EXPIRES
	03/24/2022

Bill To: Blackman Middle School
3945 Blaze Drive
Murfreesboro TN 37128

H(615)904-3860

QTY	SKU#	DESCRIPTION	PRICE EA	DISC	TOTAL
9		Safety Chains	12.00		108.00
1		Installation	2000.00		2000.00
Labor will not exceed this amount.					
1		Installation Parts	500.00		500.00
Rigging Hardware, electrical extentions, and connectors.					
500		DMX Cable	1.25		625.00
9	CTC50HC	Trusst Half Coupler Lighting Clamp	26.00		234.00
1	QUICKQ10	Chamsys Quick Q 10 1 Universe Lighting Console	2125.00	125.00	2000.00
This is the lighting controller. We can discuss other options, however we recommend this one because of its ease of use copared to lower priced options.					
9	HEXV12	Rasha Professional Hex V12 Wireless LED Light	209.00	531.00	1350.00
5 of these fixtures are for the mid stage wash					
4 of these fixtures are for the upstage line (back light)					
1		21' Black Pipe	143.00		143.00

	SUBTOTAL	6960.00
	TOTAL	6960.00

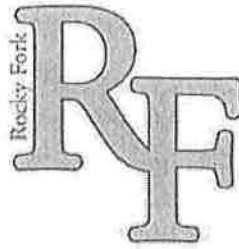
Rutherford County Schools		Board Option						
Building Program through August 2022-2027						01/29/22		
		Projected Cost of Schools Opening that Year						
		Land	Design	Site	FF&E	Construct.	Total	
	Land West of Murfreesboro - 3 schools	5,170,153	-	-	-	-	5,170,153	Comm app \$10.3M
	Land for S Murfreesboro - 2 or 3 schools	3,250,000	-	-	-	-	3,250,000	
	231 North Land 2 schools	3,500,000	-	-	-	-	3,500,000	
		-	-	-	-	-	-	
	Projects for 2020-2021 school year	5,170,153	-	-	-	-	5,170,153	
Dec-23	Riverdale High Addition	-	1,100,000	750,000	1,500,000	23,000,000	26,350,000	
Dec-23	Smyrna High Addition	-	1,100,000	750,000	1,500,000	23,000,000	26,350,000	
Dec-23	Lavergne High Addition	-	1,100,000	750,000	1,500,000	23,000,000	26,350,000	
Dec-23	Blackman High Addition	-	1,200,000	850,000	2,000,000	25,000,000	29,050,000	
Dec-23	Oakland High Addition	-	1,200,000	850,000	2,000,000	25,000,000	29,050,000	
	Projects for 2022-2023 school year	-	5,700,000	3,950,000	8,500,000	119,000,000	137,150,000	
Aug-24	Stewarts Creek Middle Add.-16 classrooms	-	500,000	450,000	650,000	11,000,000	12,600,000	
Oct-24	Blackman Elementary Addition	-	850,000	450,000	850,000	13,000,000	15,150,000	
Aug-24	Stewarts Creek Elementary Addition	-	750,000	450,000	850,000	10,000,000	12,050,000	
	Projects for 2023-2024 school year	-	1,350,000	900,000	1,500,000	24,000,000	39,800,000	
Aug-25	Middle School west side	-	2,341,800	7,200,000	4,500,000	52,000,000	66,041,800	
Aug-25	840/96 Corridor Elementary School	-	1,900,000	6,000,000	4,000,000	35,500,000	47,400,000	
	"Projects for 2023-2024" school year"	-	4,241,800	13,200,000	8,500,000	87,500,000	113,441,800	
Aug-26	Middle School Walter Hill or Plainview	-	2,341,800	7,200,000	4,500,000	55,250,000	69,291,800	
Aug-26	Elementary School for anticipated growth (where?)	-	2,100,000	6,400,000	4,200,000	40,500,000	53,200,000	
	Projects for 2024-2025 school year	-	4,441,800	13,600,000	8,700,000	95,750,000	122,491,800	
Aug-27	High School - 840/96 Corridor or Buchanan?	-	3,656,250	7,500,000	7,500,000	90,000,000	108,656,250	
	Projects for 2025-2026 school year	-	3,656,250	7,500,000	7,500,000	90,000,000	108,656,250	
	0	-	-	-	-	-	-	
	Projects for school year	-	-	-	-	-	-	
	Total 5 Year Plan Not Currently Funded						413,268,203	

ROCKY FORK MIDDLE SCHOOL

Principal
Jennifer Clark

100 Thunderstorm Lane
Smyrna, TN 37167

www.rfm.rcschools.net



Assistant Principals
Alan Davis
Dustin Brannon

Phone: 615-904-6780
Fax: 615-904-6781

February 28, 2022

Mr. Lee and the Rutherford County School Board,
Please find attached our request to run electrical to the baseball field for a scoreboard. The plan, estimate and timeline are also attached.

Thank you for your consideration,

A handwritten signature in cursive script that reads 'Jennifer D. Clark'. The signature is written in dark ink and is positioned above the printed name 'Jennifer Clark'.

Jennifer Clark
Rocky Fork Middle School
Principal

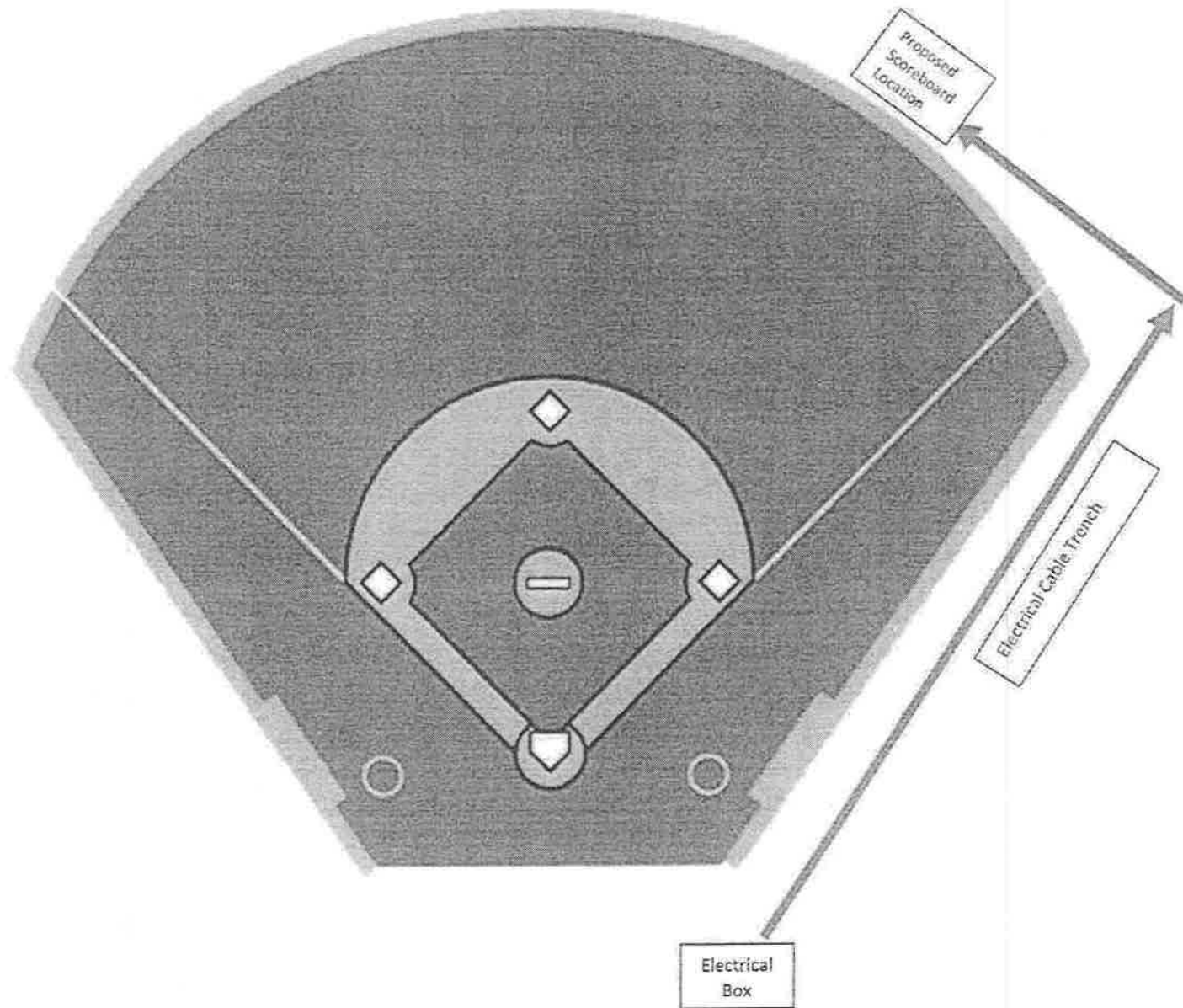
Rutherford County Schools

Application for Campus Construction Project

Before any request for construction of proposed buildings will be forwarded to the Rutherford County School Board, the following form must be filled out in full and submitted to the Rutherford County Schools Engineering and Construction Department with a letter from the School Principal, a site plan, floor plan and elevations (if applicable), a full estimate, and schedule.

1. School Name: Rocky Fork Middle School
2. Principal: Mrs. Jennifer Clark
3. Project Name: Electrical to Scoreboard location behind baseball field
4. Assistant Principal who is overseeing the project: Mr. Alan Davis
5. Does project support recreational sports, athletics or education? Athletics
6. Does this project meet all gender equity criteria? Yes
7. What department is this project being constructed for? (I.E. Baseball, softball, band, FFA, etc.) Baseball
8. What is the anticipated cost for this project (this should include all utility connection fees, building permits, inspection, and construction). Attach and submit a detailed estimate. See attached estimate
9. What is the funding source and are funds currently available: (Grant, Booster Club, etc.) List all sources. Funding source is the Baseball Team Account through various fundraising endeavors the team has undertaken
10. If a grant or funded by a foundation/donor/charitable organization, what is the foundation's name?
Do construction plans meet criteria for funding? N/A
11. If funded by a local financial institution, has the loan been approved and who is the guarantor for loan? N/A
12. Do you have a site layout showing where this project will be constructed on campus? No, see estimate for scope of work
13. Has RCS Engineering & Construction reviewed project location? Are there any conflicts in utilities or easements?
No
14. Has MTEMC, CUD, MWSD or other local utilities been contacted for service connection if required? N/A
15. Are plans drawn and stamped by Architect/Engineer? N/A
16. Have plans been submitted to Rutherford County Codes or Murfreesboro City Building Codes Offices for review and/or approval. (LaVergne City Codes, Smyrna City Codes, Murfreesboro City Codes) N/A
17. What is your time line for completion of project? When will it start and when will it be completed? End of February- First of March
18. If stated that construction project is at no cost to school Board all cost should be included in project. This includes electrical, plumbing, and mechanical services. See estimate

Rocky Fork Scoreboard Construction Drawing





Estimate



Customer Rocky Fork Middle
100 Thunderstorm Lane
Smyrna, TN 37167

From Jason Tolleson
Tolleson Inc.
Po Box 914
Smyrna, TN 37167
615-947-8287
jt@tollesoninc.com

Estimate Number 1899
Sent Date February 8, 2022
Expires March 10, 2022

Estimate for Power to Scoreboard Location

Item	Quantity	Price	Taxable	Total
Labor	1	\$1,100.00	0.000%	\$1,100.00
Notes: Scope of Work: We will trench from the electrical box behind the backstop to behind the right field fence. Conduit and cabling will be ran approx. 350'. A 40amp 220v breaker will be installed.				
Parts	1	\$3,412.00	0.000%	\$3,412.00
Notes: 1200' #6 THHN Cable 380' 3/4" PVC conduit Junction box 40amp 220v breaker Trencher rental				
Subtotal				\$4,512.00
Tax				\$0.00
Total				\$4,512.00

Notes

Thank you for considering Tolleson Inc.!



Rutherford County Schools

Application for Campus Construction Project

Before any request for construction of proposed buildings will be forwarded to the Rutherford County School Board, the following form must be filled out in full and submitted to the Rutherford County Schools Engineering and Construction Department with a letter from the School Principal, a site plan, floor plan and elevations (if applicable), a full estimate, and schedule.

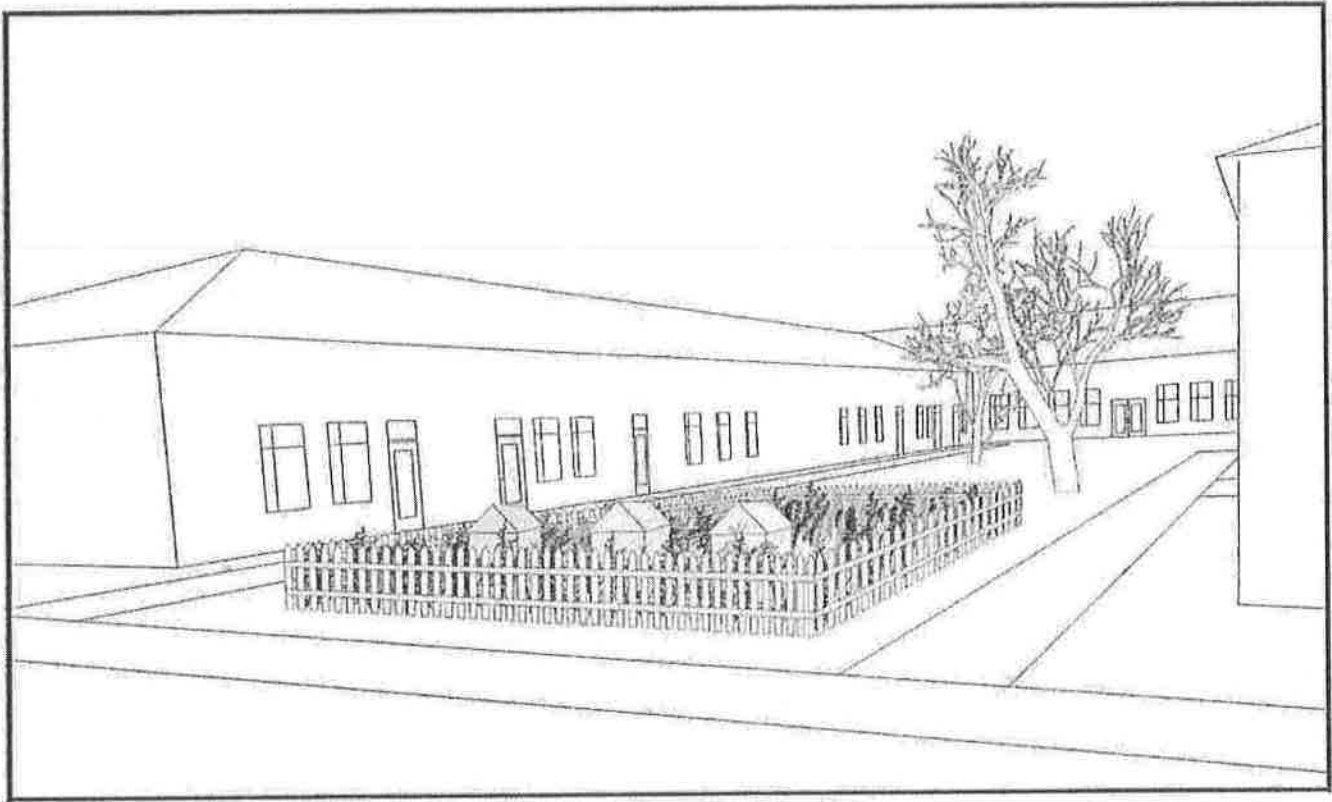
1. School Name: **Stewarts Creek Middle School**
2. Principal: **Dr. Letoni Murry**
3. Project Name: **Wildflower Garden**
4. Assistant Principal who is overseeing the project: **Mr. Keith Young**
5. Does project support recreational sports, athletics or education? **Education**
6. Does this project meet all gender equity criteria? **Yes**
7. What department is this project being constructed for? (I.E. Baseball, softball, band, FFA, etc.) **STEM**
8. What is the anticipated cost for this project (this should include all utility connection fees, building permits, inspection, and construction). Attach and submit a detailed estimate. (**See Attached**)
9. What is the funding source and are funds currently available: (Grant, Booster Club, etc.)List all sources. **Grant.**
10. If a grant or funded by a foundation/donor/ charitable organization, what is the foundations name? Do construction plans meet criteria for funding? **TSIN/TVA Mini grant**
11. If funded by a local financial institution, has the loan been approved and who is the guarantor for loan: **N/A**
12. Do you have a site layout showing where this project will be constructed on campus?
13. Has RCS Engineering & Construction reviewed project location? Are there any conflicts in utilities or easements? **Yes**
14. Has MTEMC, CUD, MWSD or other local utilities been contacted for service connection if required? **N/A**
15. Are plans drawn and stamped by Architect/ Engineer? **N/A**

16. Have plans been submitted to Rutherford County Codes or Murfreesboro City Building Codes Offices for review and/or approval. (LaVergne City Codes, Smyrna City Codes, Murfreesboro City Codes): **N/A**

17. What is your time line for completion of project? When will it start and when will it be completed? **Begin April and completed in May**

18. If stated that construction project is at no cost to school Board all cost should be included in project. This includes electrical, plumbing, and mechanical services. **(See attached)**

19. Do you have a contractor for constructing/completing the project? What is the name of Contractor? If no, who will be overseeing the project from the community and who will be doing the work? **N/A**



STEWARTS CREEK MIDDLE SCHOOL
**WILDFLOWER GARDEN
& APIARY PROJECT**
An Alternative Learning Environment

OVERVIEW

The SCSM Wildflower Garden and Apiary is the result of a \$5000 TVA Mini Grant awarded to our STEM program. It will be a 24' x 24' wildflower garden with three cutting-edge bee hives (Flow Hives) in the middle. It is planned to be an alternative learning environment that can be utilized cross circularly across all grade levels. As students design and maintain the colonies and gardens, they will learn about the way multiple organisms work together to maintain a functional system. These principles directly illustrate the work done by biologists, ecologists and those who study complex systems in natural and social sciences. Students will also get to be mathematicians and statisticians as they gather population data and make predictions about the growth or decline of the colonies. In addition to benefiting our students, it will also help us toward our goal of being a certified STEM school.

PRECEDENT

More and more schools are adding an apiary to enrich their students learning environment. On campus bee hives have a number of benefits including but not limited to:

- Teaching students about math, physics, biodiversity, environmental sciences, agriculture, system dynamics, etc.
- Engaging students in an interactive way.
- Learning about the food supply.
- Contributing to a positive school environment
- Helps improve the bee population

A quick google search will reveal that this growing trend is one worth participating because of its high number of diverse benefits.

LOCATION

The intended location of the garden and apiary is designed to maximize its efficacy while also placing it in an easily manageable, non-centralized location. In other words, teachers will be able to use it conveniently without it being in a place commonly traveled by students.

It is our intent to place the garden and apiary in an alcove between the 7th Grade hall and the Elective hall right outside the STEM room. (See Image 1).

The location was chosen for the following reasons:

- Management. It will be primarily managed by the STEM teacher and STEM classes. Having it right outside the STEM room will make it easy to access and maintain.
- Accessibility. Keeping it close to the building makes it easily accessible for classes that would like to utilize it as an alternative learning environment. This would increase its use since classes would not have to travel across campus to use it.
- Anti-theft. Hives are regularly stolen from apiaries. This location is not easily accessible to vehicles and its proximity to the school will be a deterrent to theft or vandalism.
- Safety. Locating the apiary in a central location, not accessible by unsupervised students allows us to keep established boundaries so best safety practices can be followed. Also, the orientation of the hives and design of the garden encourage bees to take a route that leads them away from the school as they hunt for nectar and pollen.

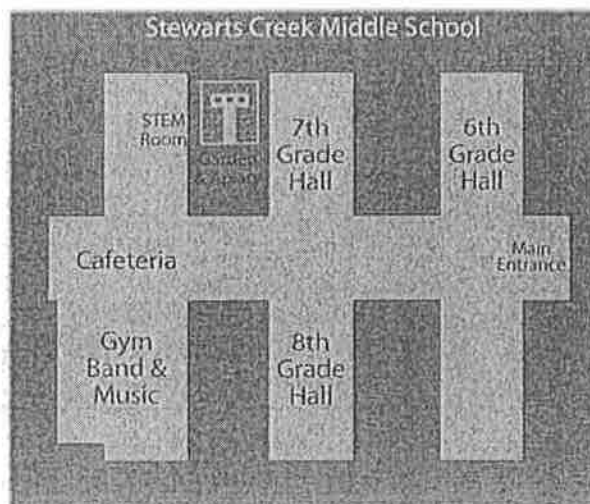


Image 1

DESIGN

The Wildflower Garden and Apiary has been designed to serve as a functional apiary and teaching environment. It will consist of a stable picket fence with a lockable gate. Upon entrance, a gravel path will lead to an opening that will accommodate a viewing area and three hives. The whole area will be surrounded by tall, local wildflowers. (See image 2) The hives each have a single, small entrance for the bees to use when leaving and returning to the hive. The entrances are situated so that bees have to fly up and away from the school when leaving the hive. This will minimize bees flying directly into anyone potentially walking past the outside of the garden and direct them away from the school.

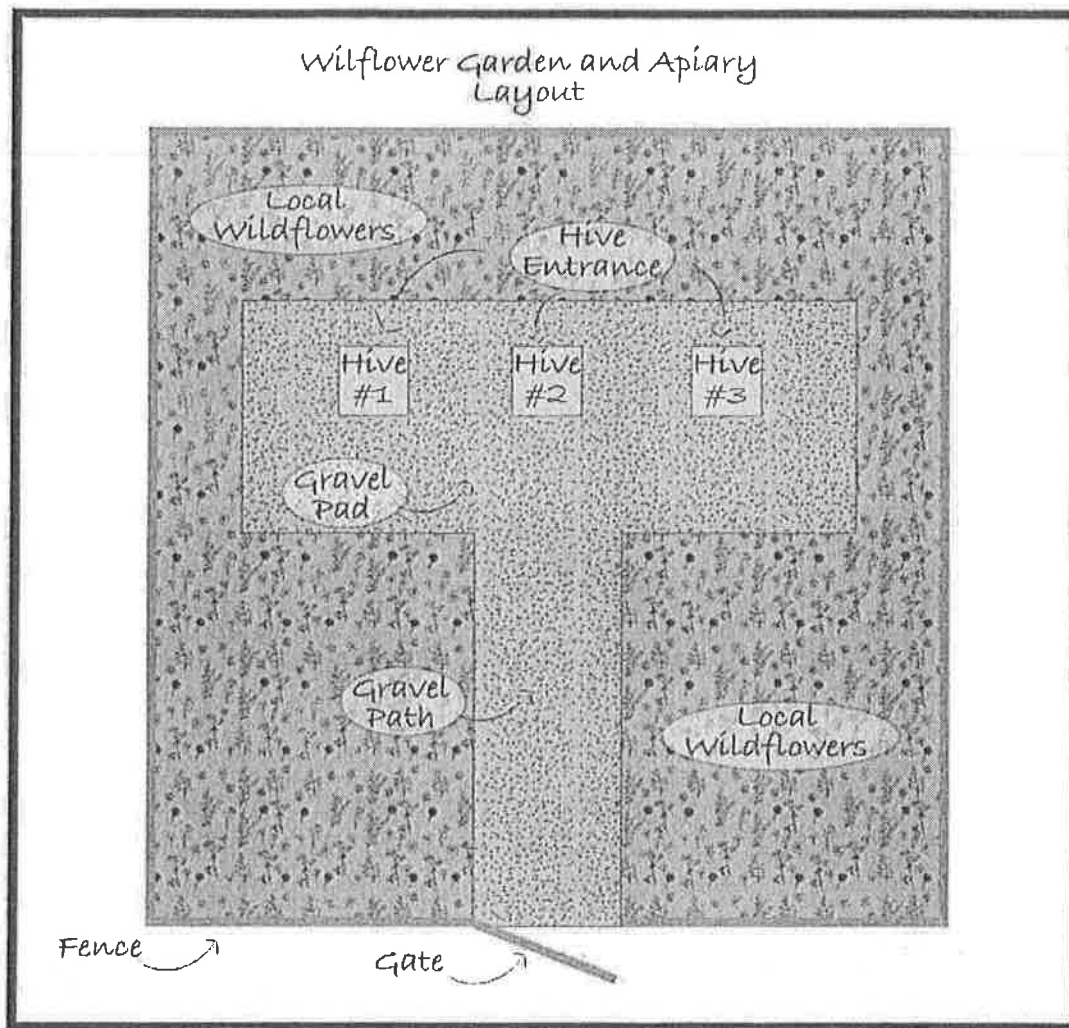


Image 2

ADDITIONAL CONSIDERATIONS

The vision, design, elements, and planned implementation of this project have been undertaken in a way to ensure the safety of our students and success of our apiary. The plan is illustrated by a few various, additional key decisions:

- Extensively researched the practice of establishing and maintaining an apiary from established best practices.
- Partnered with an experience bee keeper (Travis Henry - 615.294.3973) who has also provided additional contacts in the area to help with future support with our apiary.
- Will connect with the Rutherford County Bee Keeping Club.
- Chose to place it in a centrally located area to improve safety of students and equipment. Placing it further away on campus would make it more likely for unsupervised students to interact with the hive while crossing campus in the morning or afternoon. This location is one not traveled by students unsupervised and is

convenient to regularly monitor. Also, because hives are known to be stolen, this location is not easily accessible by vehicle and will deter potential theft or vandalism.

- The orientation of the garden apiary is intended to keep bees from interacting easily with any people who may be passing through the area. Also, it is placed intentionally to direct the bees away from the school alcove even though bees would not likely gather in the area near the hive. They prefer to travel away from their home hive but up to 6 miles away.
- Bees will come from an established bee breeder. We will populate the hives with Italian Honey Bees. This breed is known for being docile and non-aggressive. Likewise, we will be using queens that are bred genetically for docility. Honey bees do not generally seek out people to sting and the apiary will not make it any more likely for a person to be stung by a bee. The location and fence will make sure no curious students are able to easily access the hives.
- Safety equipment will be kept on hand for the rare times we will need to interact with the hive. We will have on hand, two bee suits, one bee jacket, two additional veils, and a smoker.
- Parents will be notified of the apiary when it is planned to be used for instruction. Needed waivers will be signed and potential health concerns will be considered and appropriate action taken.
- We chose the Flow Hive platform because it is ideal due to its ease of maintenance and has transparent sides so students can observe the colony in action. It has compressible frames that could allow honey to be extracted if we have the opportunity to harvest some.

POSTERITY

Ultimately, the SCM Wildflower Garden and Apiary is planned to become a powerful resource for classes in multiple grade levels and a signature feature when we become a STEM designated school. This functional, educational showpiece will certainly have benefits beyond what we currently imagine and is intended to impact students for years to come.

Rutherford County Schools

Application for Campus Construction Project

Before any request for construction of proposed buildings will be forwarded to the Rutherford County School Board, the following form must be filled out in full and submitted to the Rutherford County Schools Engineering and Construction Department with a letter from the School Principal, a site plan, floor plan and elevations (if applicable), a full estimate, and schedule.

1. School Name: Oakland High School
2. Principal: John Marshall
3. Project Name: Oakland High Agriculture/Construction Storage Barn
4. Person overseeing the project: BoE Project Manager TBD
5. Does project support recreational sports, athletics or education? Education
6. Does this project meet all gender equity criteria? N/A
7. What department is this project being constructed for? (I.E. Baseball, softball, band, FFA, etc.)
Career & Technical Education
8. What is the anticipated cost for this project (this should include all utility connection fees, building permits, inspection, and construction). Attach and submit a detailed estimate.
Approximately \$24,000. Please see attached estimate from potential bidder
9. What is the funding source and are funds currently available: (Grant, Booster Club, etc.)List all sources. Fiscal 21/22 CTE General Purpose funds will pay for this project.
10. If a grant or funded by a foundation/donor/ charitable organization, what is the foundations name? N/A
Do construction plans meet criteria for funding?
11. If funded by a local financial institution, has the loan been approved and who is the guarantor for loan N/A
12. Do you have a site layout showing where this project will be constructed on campus?
Yes. See attached documents
13. Has RCS Engineering & Construction reviewed project location? Are there any conflicts in utilities or easements? There has not been a formal project review conducted at this time.
14. Has MTEMC, CUD, MWSD or other local utilities been contacted for service connection if required? No service connections are required at this time.

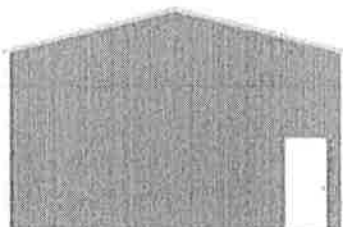
16. Have plans been submitted to Rutherford County Codes or Murfreesboro City Building Codes Offices for review and/or approval. (LaVergne City Codes, Smyrna City Codes, Murfreesboro City Codes) No.
17. What is your time line for completion of project? When will it start and when will it be completed? Spring 2022
18. If stated that construction project is at no cost to school Board all cost should be included in project. This includes electrical, plumbing, and mechanical services. Project is being funded by the Board (CTE)
19. Do you have a contractor for constructing/completing the project? What is the name of Contractor? If no, who will be overseeing the project from the community and who will be doing the work? No. Brian Lewis and BoE Project Manager(TBD) will work with winning bidder to ensure appropriate installation.

Your configuration is complete. Thank you for configuring your MaxSteel building. Please contact your local dealer to discuss final options and pricing.

Step 6 - Building Summary

FRONT

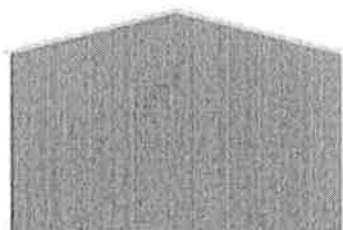
LEFT
SIDE



RIGHT
SIDE

BACK

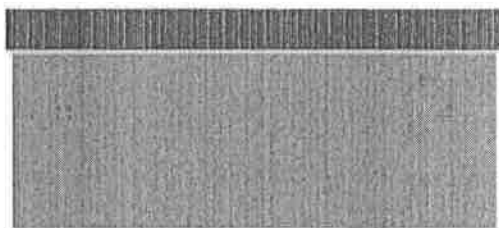
RIGHT
SIDE



LEFT
SIDE

LEFT

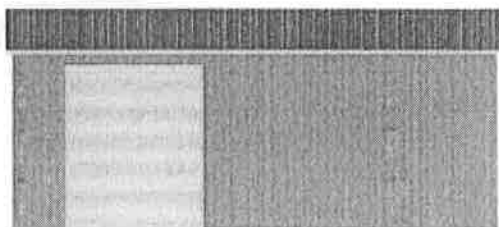
BACK
END



FRONT
END

RIGHT

FRONT
END



BACK
END

SUMMARY

COST

\$23,366.49

COST BREAKDOWN

(1)	24' x 36' Vertical	\$7,054.22
(1)	SIDE 13' HIGH (36' L)	\$1,356.88
(2)	END WALL 13' (24'L)	\$6,625.72
(2)	SIDE WALL 13' (35'L)	\$2,761.38
(2)	Vertical Siding Surcharge End (24'W)	\$1,221.98
(2)	Vertical Siding Surcharge Side (35'L)	\$793.50
(1)	COLOR MATCHING SCREWS	\$458.17
(1)	CERTIFICATION (36'L)	\$396.75
(1)	12 GAUGE (36'L)	\$436.42
(1)	Walk In Door	\$436.42
(1)	Garage Door on Side (10' x 12')	\$1,825.05



MaxSteel Buildings. Copyright © 2013-17. All rights reserved.

1515 South Church St. • Murfreesboro, Tennessee 37129

Phone: (615) 956-7272

Oakland High School CTE Storage Building

February 17, 2022

Proposed Dimensions: 24'x35'

